

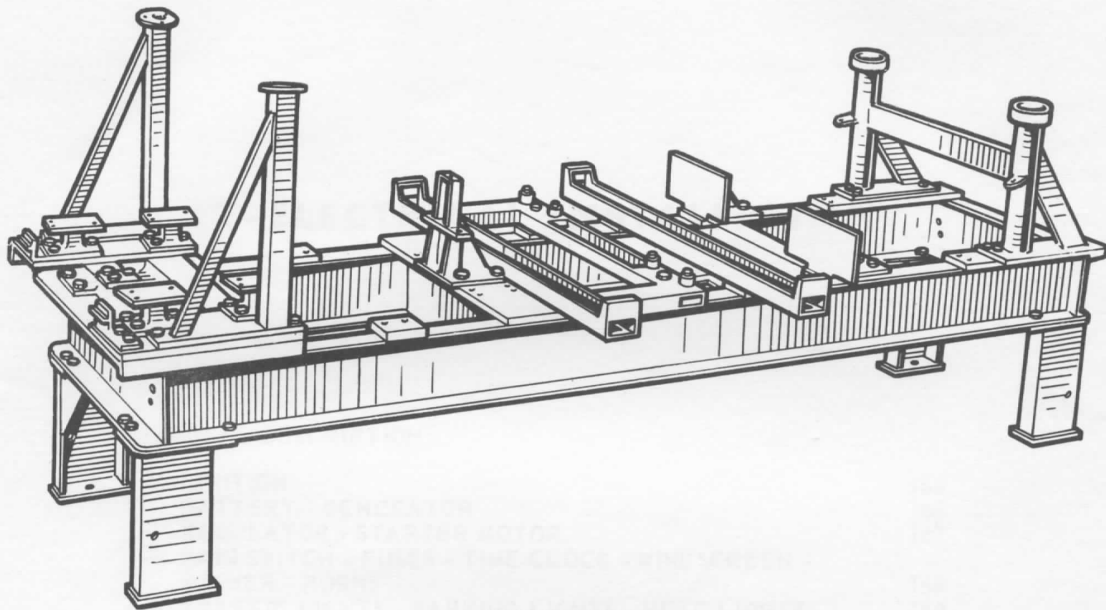


## II - CHASSIS OR BODYWORK

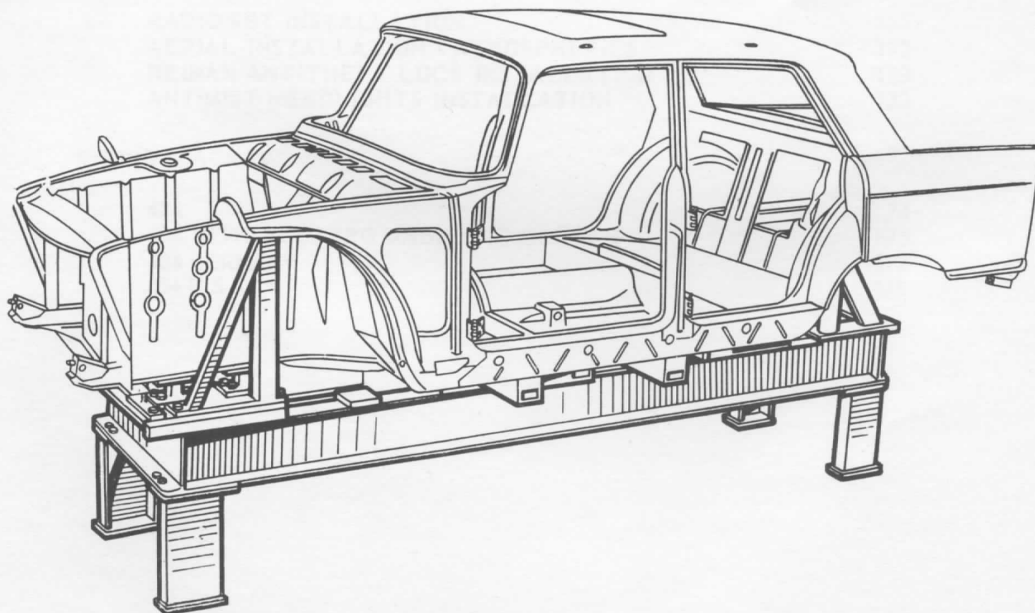


BODYBENCHES 161

BARE SHELL POSITIONED ON BODYBENCH 161



BODYBENCH



BARESHELL ON BODYBENCH

## 11 - BODYWORK OR HULL

CELETTE designations for PEUGEOT jigs	Page 103
CELETTE benches	104
FORGES DE CHATILLON or FRANTZ benches	106
Checking the hull of 404 associated vehicles equipped with rear suspension crossbar	107

## "CELETTE" DESIGNATIONS FOR PEUGEOT JIGS

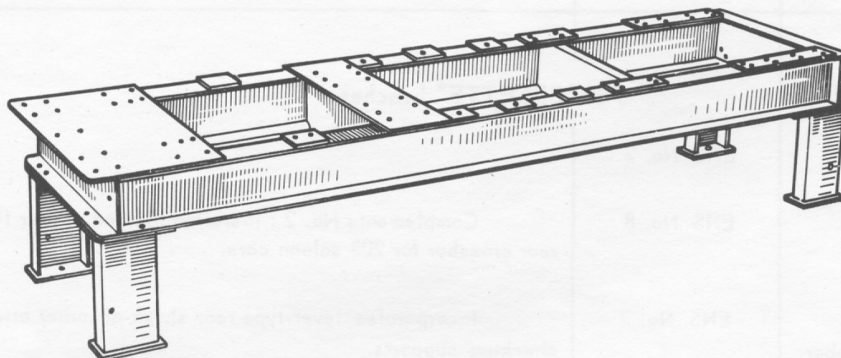
Car type	Designation	Description
For "CELETTE" benches		
203 saloon cars	ENS No. 2	
203 associated vehicles	ENS No. 8	Complements No. 2 : installed instead of rear floor checking rear crossbar for 203 saloon cars.
403 saloon cars (up to serial number 2.370.074)	ENS. No. 7	Incorporates lever-type rear shock-absorber attachment point checking supports.
403 saloon cars (from serial number 2.370.075)	ENS No. 7 bis	Complements No. 7 for 403s equipped with telescopic shock-absorbers ; installed instead of No. 7 rear supports.
403 associated vehicles	ENS No.14	Complements No. 7 : frame with two jigs for family-type 403s and for Utility-type 403s respectively ; attaches at the rear of the bench.
404 saloon cars	ENS No. 22	Includes jig No. 7 bis for 403 saloon cars equipped with telescopic shock-absorbers.
404 cabriolets	ENS No. 22	Used without the 2 holding angles for the 404 saloon cars, and without the bodywork lower end centering crossbar.
404 associated vehicles (family & utility cars)	ENS No. 49 or	Complements No. 22 : rear floor checking frame ; installed instead of the rear support of jig No. 22 ; used without the two bodywork holding angles.
For "CHATILLON" or "FRANTZ" benches		
	ENS No. 49 P	"CELETTE" jig for 404 associated vehicles, designed for "FORGES DE CHATILLON" or "FRANTZ" benches for 404 saloon cars : used without the rear floor holding crossbar.

The above should be ordered from :

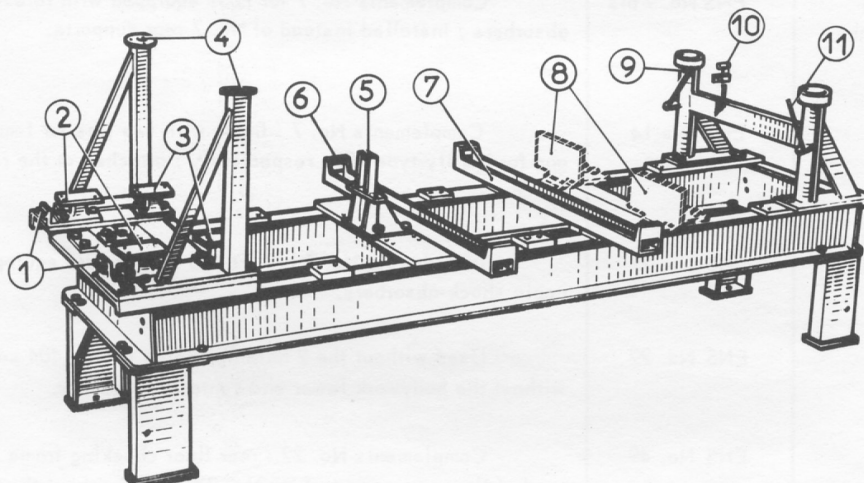
T.U.P.A.C., 18 Bvd National, LA GARENNE, Seine, France

**"CELETTE" ASSEMBLING BENCH**

Universal base - Ref. No. : MUF 2



Jig, for saloon cars, cabriolets, &amp; coupés - Ens. 22



- 1 - Supports, centering, lower front frame crossmember.
- 2 - Supports, mounting hole position checking, front triangle front support yoke.
- 3 - Supports, mounting hole position checking, front crossmember.
- 4 - Supports, attachment checking, front shock-absorber upper support on front wing valances.
- 5 - Support, attachment checking, engine rear bracket.
- 6 -
- 7 -
- 8 - Angle brackets, hull holding - presses against bottom hull section when straightening body rear section with a jack.
- 9 - Support, position checking, rear spring upper cup.
- 10 - Template, checking, stabilizing bar attachment.
- 11 - Rods, threaded, hull-to-bench attaching.

**NOTE.** - Hull holding angle brackets 8 are supplied under Ref. No. 22 M on special order only.

- Support 9 (Ref. No. : ENS. No. 7 bis) may be used for 403 saloon cars equipped with telescopic shock-absorbers.

Crossbar 7 and angle brackets 8 should be removed when working on cabriolets or coupés.



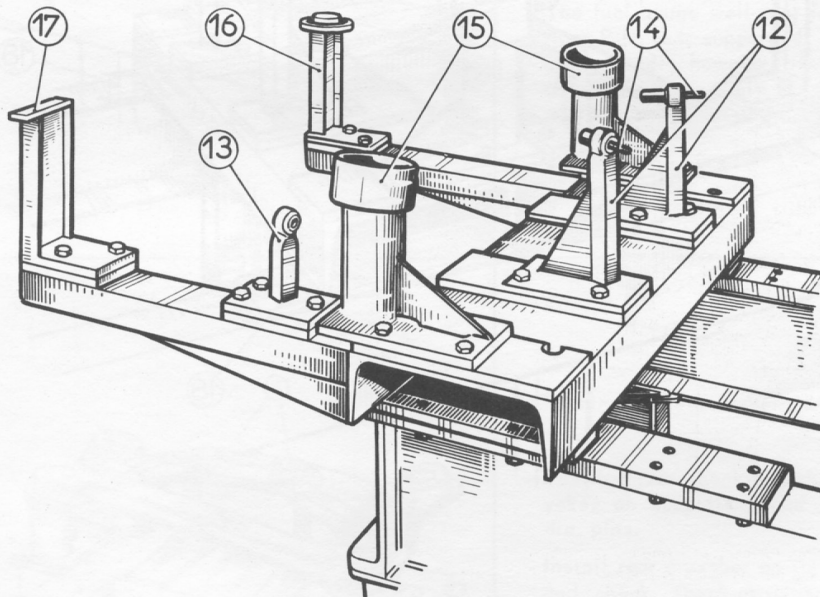
**"CELETTE" ASSEMBLING BENCH**

Jig, for 404 associated vehicles

**Description of jig components :**

Jig, No. 49, is used on a "CELETTE" MUF 2 base together with jig No. 22, except for the following components :

- Angle brackets, hull holding (8)
- Support, position checking, rear spring upper cup (9)
- Template, checking, stabilizing bar attachment (10)
- Rods, threaded (11)



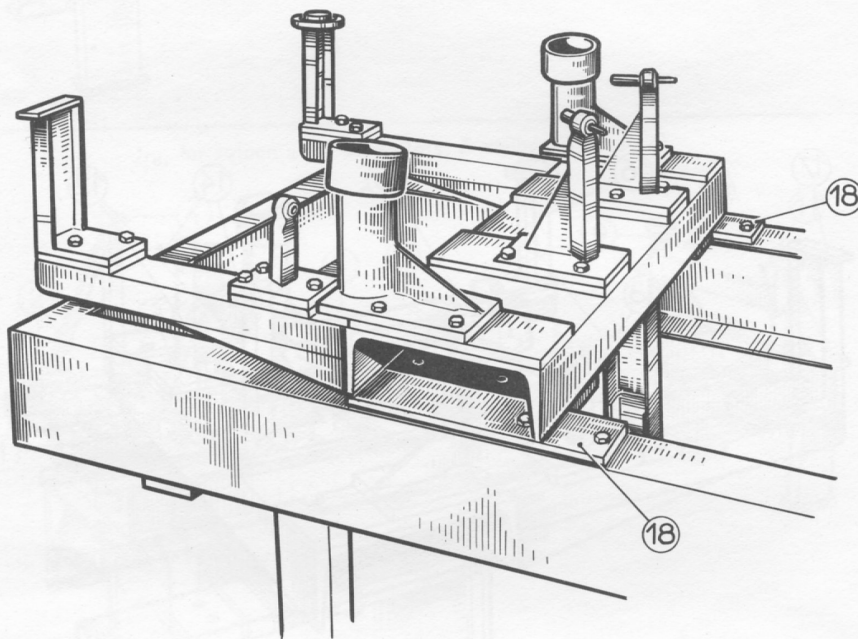
- 12 - Supports, centering, rear shock-absorber yoke.
- 13 - Leg, position checking, stabilizing rod yoke.
- 14 - Pins, 11.5-mm dia., to be engaged in supports 12 & 13 for checking yokes.
- 15 - Supports, checking, rear floor height under rear spring cups.
- 16 - Leg, centering, gage well passage in rear floor.
- 17 - Support, rear floor.

**"FORGES DE CHATILLON" or "FRANTZ" BENCHES**

Jig for 404 associated vehicles - ENS. 49 P

This jig is built by "CELETTE" under Ref. No. 49 P for adapting to "Forges de Chatillon" or "Frantz" benches.

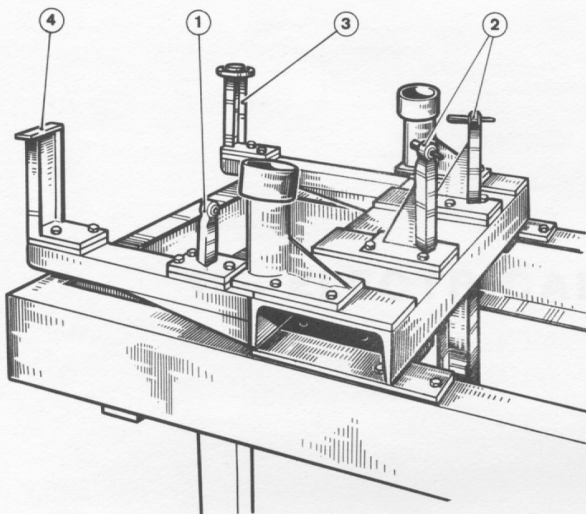
This jig differs from No. 49 by the following points ; two attaching lugs 18 have been added to the frame, and the height of the vertical parts has been decreased by 28 mm.



The above jig may also be used with "CELETTE" benches by installing two 28-mm high spacer blocks between the frame and universal base MUF 2 ; the spacer blocks should be ordered specially from T.U.P.A.C.

"FORGES DE CHATILLON" and "FRANTZ" no longer manufacture PEUGEOT benches.

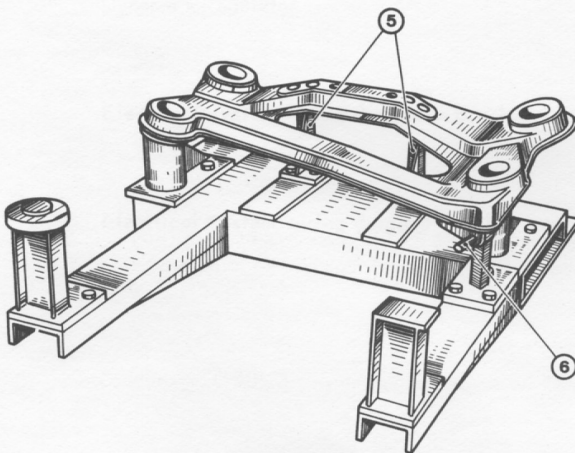
## 404 ASSOCIATED VEHICLES WITH REAR SUSPENSION CROSSBAR



## Checking the hull assembly with the hull bench

Use a "CELETTE" bench equipped with jig ENS. 49, or a "FORGES DE CHATILLON" or "FRANTZ" bench equipped with jig ENS 49 P.

- Install the hull assembly on the bench, after removing the rear suspension crossbar and the rubber blocks from the hull.
- Stabilizing rod attachment brackets 1 and rear shock-absorber attachment brackets 2 are not used, but should be left on the bench.
- The fuel gauge well rear left template (3) and floor R.H. rear support (4) are the only components used ; however, these are adequate to check a hull assembly, or rear floor and support position, when carrying out repairs.



## Checking the rear suspension crossbar

- Position rear shock-absorber upper attachment yokes on supports 2 and secure, using 8-mm dia. pins.
- Install rear crossbar on jig ENS 49 or ENS 49 P and check shock-absorber yoke attachment screws for proper positioning.

If the rear crossbar is not damaged, it should be positioned correctly with respect to all checking points of the jig : rear spring cups, stabilizing rod and shock-absorber attachment points.

- Insert a 11.5 mm dia. pin in stabilizing rod attachment hole 1.