

## ACCESSORIES

|   |            |
|---|------------|
| Contents  | Section 13 |
| Windshield Wiper Motor .....                        | 13- 2      |
| Wiper Motor Switch and Windshield Washer Pump ..... | 13- 2      |
| Linkage and Parking Switch .....                    | 13- 2      |
| Windshield Wiper Assembly .....                     | 13- 3      |
| Electric Clock .....                                | 13- 3      |
| Speedometer .....                                   | 13- 3      |
| Heating and Defrosting System .....                 | 13- 4      |
| Heater Assembly .....                               | 13- 4      |
| Ventilating System .....                            | 13- 5      |
| Radio Installation .....                            | 13- 6      |
| Antenna Installation .....                          | 13- 7      |
| Suppressors .....                                   | 13- 7      |
| Coil .....  | 13- 7      |
| Generator .....                                     | 13- 7      |
| Roof Rack .....                                     | 13- 7      |
| Trailer Hitch                                       |            |
| Trailer Hitch Assembly .....                        | 13- 8      |
| Extension Arm Assembly .....                        | 13-10      |
| Trailer Hitch Bracket Assembly .....                | 13-10      |
| Trailer Hitch Support Assembly .....                | 13-11      |
| Hook for Safety Chains .....                        | 13-11      |
| Ball Joint Mounting Plate .....                     | 13-11      |
| Dimension Chart .....                               | 13-11      |

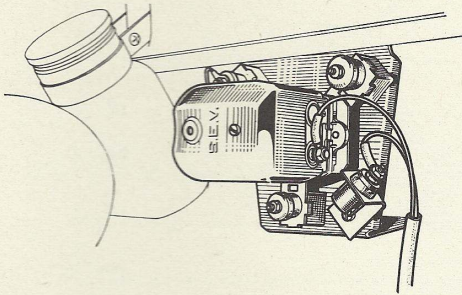


## ACCESSORIES

### WINDSHIELD WIPER ASSEMBLY

#### Windshield Wiper Motor

The windshield wiper motor, located in the engine compartment is linked to an automatic parking device which leaves the blades in a low horizontal position when turned off.

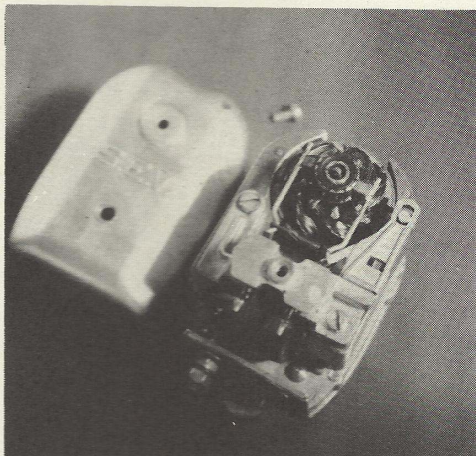


An automatic brake is incorporated into the wiper motor to prevent the motor from spinning after the wipers are in their parking position.

If this brake is out of adjustment, it may cause any of these conditions: sluggish operation of wipers, motor will not start or may run for a few minutes then stop, blow fuses.

The adjustment is easily accomplished as follows:

- 1 - Remove the motor cover.



- 2 - Remove the two screws holding the brush support. This operation allows the brake shoe pivot to realign itself in the slot.

- 3 - Tighten the two screws and test the motor for free operation by switching on motor. If motor does not run freely, repeat Step #2.

- 4 - Replace cover.

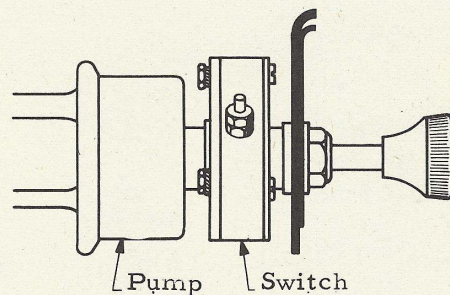
The windshield wiper motor draw is: 2.5 Amp.

#### Wiper Motor Switch and Windshield Washer Pump

A combination windshield wiper motor switch and windshield washer pump is installed since September 1961.

To switch on wiper motor, turn switch knob clockwise.

To operate the windshield washer pump, press on the knob.



#### Linkage and Parking Switch

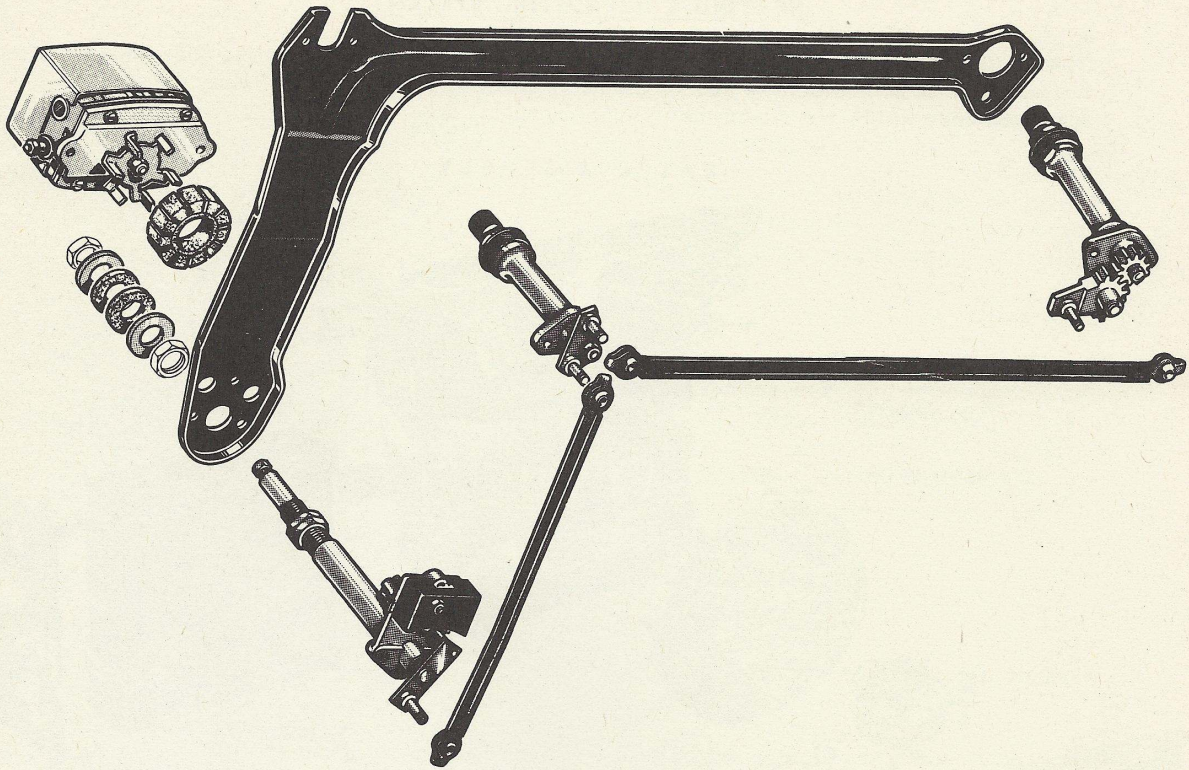
The wiper system incorporates rigid linkages to operate the wiper transmissions and arms in parallel. Blade wipe areas overlap to a considerable degree. Linkages and transmissions are secured on a frame support and can be removed as a complete unit.

The parking switch is secured onto the wiper motor transmission.



## ACCESSORIES WINDSHIELD WIPER ASSEMBLY

13-3

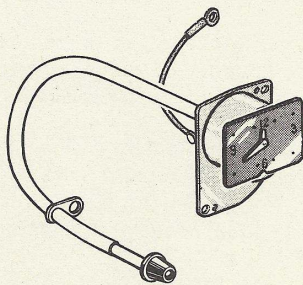


### Electric Clock

The electric clock will operate as long as the battery terminals are connected. If the battery has been disconnected, push on the chromed knob located at the left of the instrument panel and turn clockwise to reset and restart the clock.

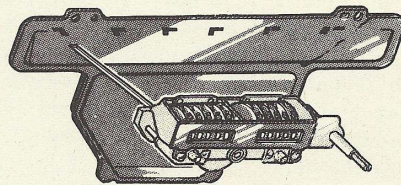
The clock can be adjusted faster or slower through a small regulating screw located behind the clock above the resetting control cable.

The clock draw is: 5 Milliamperes.



### Speedometer

The speedometer comprises an odometer and a trip recorder as a complete unit. The trip recorder is reset to zero by the chromed knob located at the trip recorder on the instrument panel.



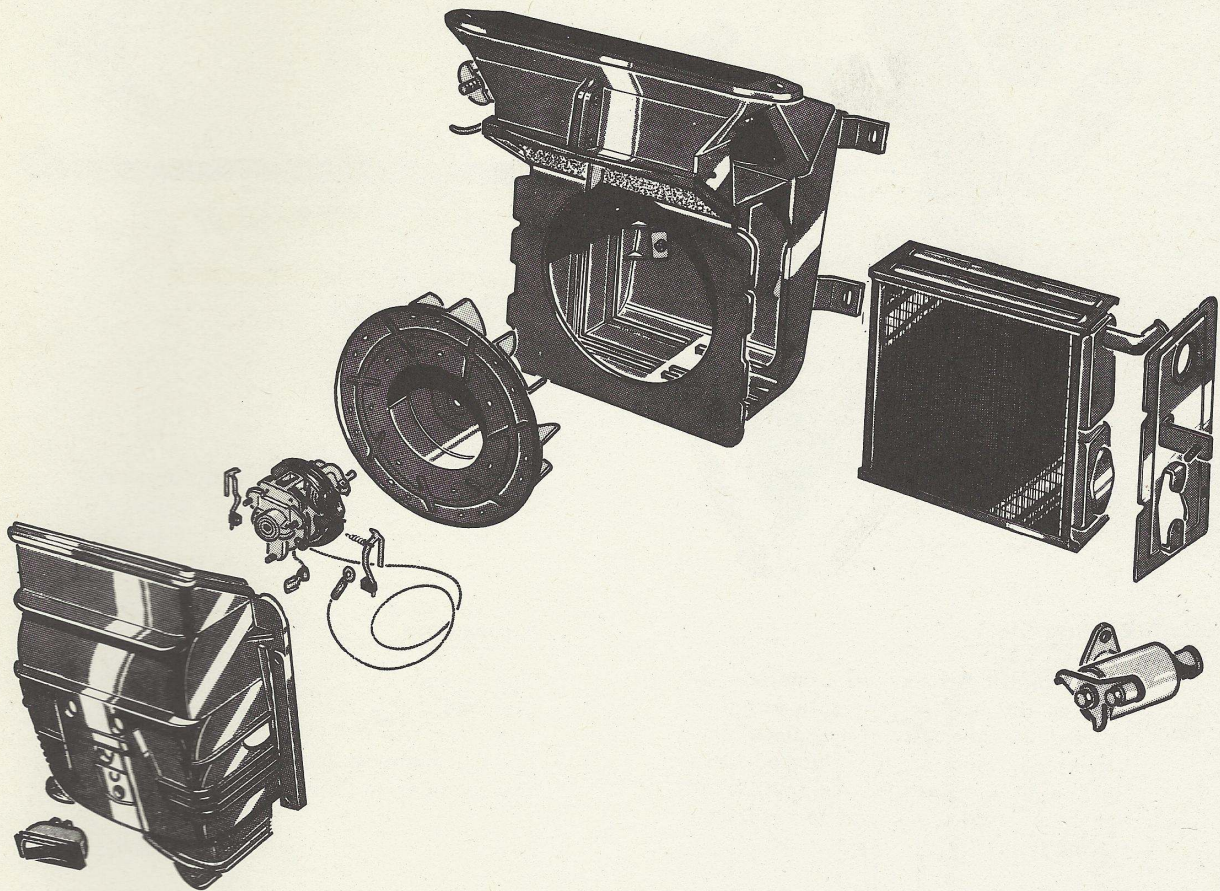


## ACCESSORIES

### HEATING & DEFROSTING SYSTEM

The "Sofica" heater provides combinations of heating, windshield defrosting and ventilation. The plastic heater case houses the heater core, the water control valve, the two-speed fan and switch, and the air distribution channels.

#### HEATER ASSEMBLY



The outside air inlet valve is operated by a knob under the dashboard to the right of the steering column. When this knob is pulled out, outside air is admitted to the heater. While the vehicle is moving, it is usually not necessary to use the fan.

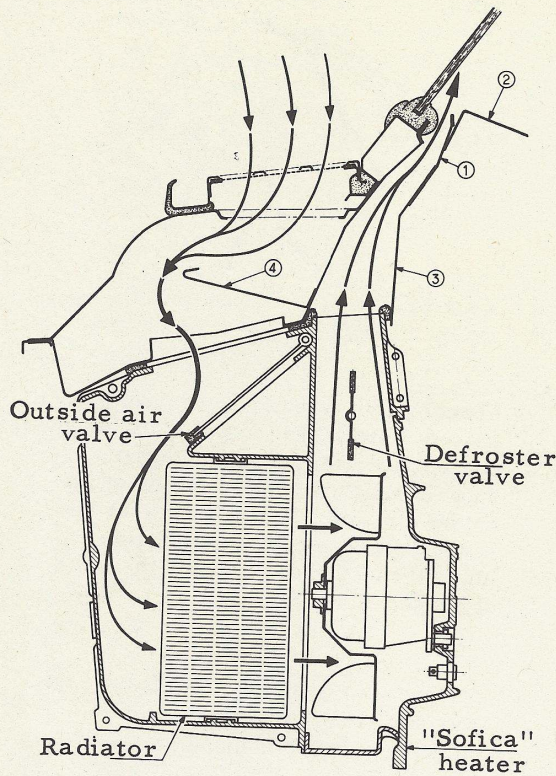
When the outside air valve is closed, by pushing in the knob, the heater recirculates inside air. It is then necessary to use the fan in high or low speed.

The outside air valve cable can be adjusted by repositioning the cable housing in the retaining clamp. Proper adjustment is obtained when a positive contact of the valve closing and opening is heard.

The two speed electric fan is mounted to the front housing of the heater assembly, which can be easily removed.

The motor is controlled by a three position switch incorporated in the front housing. In low speed the motor draws 2.6 Amps. In high speed the amperage draw is 4.3 Amps.





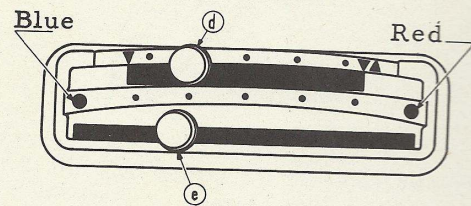
- 1 - Defroster duct
- 2 - Dashboard
- 3 - Windshield opening lower frame
- 4 - Rain baffle

The temperature knob (e) which operates the water control valve is located on the dashboard above the heater. Moved to the left (blue dot) the control is set in the cold position. When moved all the way to the right (red dot) maximum heat is obtained. The temperature knob can be set in any intermediate position from blue to red mark for any temperature from cold to hot.

This valve is adjusted by loosening the clamp at the valve end of the cable. Set the valve in the closed (down) position. Set the knob 1/8 inch from the left end of the slot (blue dot) and tighten the cable clamp.

Some air from the heater is directed to the windshield defrosting ducts by moving the defroster knob (d) to the right. This knob is located directly above the temperature control knob.

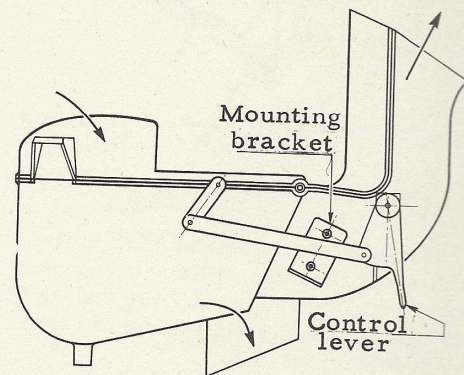
The defroster control cable can be adjusted by repositioning the cable housing in the retaining clamp.



## Ventilating System

The air intake grille is located on top of the cowl panel.

The air entering the cowl grille flows through 2 ducts which guide the air into control boxes on each side of the car. Each control box is equipped with two doors which regulate and distribute the flow of air down to the floor or up through the dashboard.

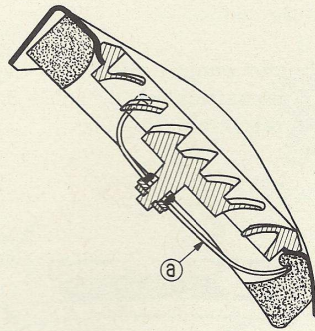


The circular air louver on the dashboard can be rotated 360° in order to direct the flow of air toward the windshield, or toward the passengers.



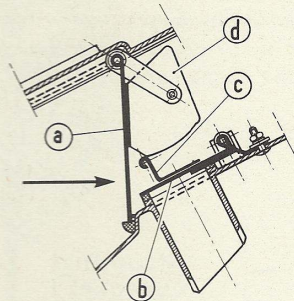
## ACCESSORIES

The air louver is secured to the dashboard by a 3 fingered clip (a) hooked under the dashboard panel.



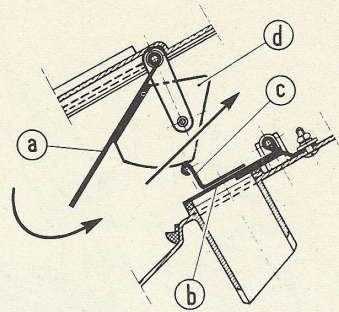
The two doors of the control box are operated by a single lever.

The lever controls the door (a). The door (a) is fitted with a cam (d) which operates the spring loaded door (b) through a bracket (c). When the control lever is up, the door (a) is closed, and the door (b) held down closed by the cam (d). No air enters the car.

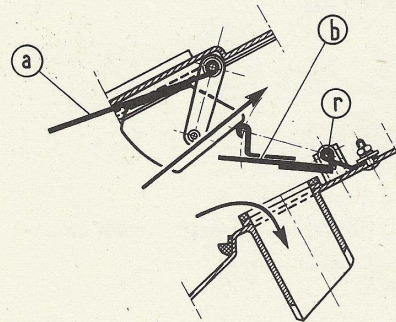


The control lever is moved down to the first notch, the door (a) is opened, the door (b) is closed, held down by the cam (d). The air enters the car through the dashboard louvers.

The flow of air can be regulated by stopping the control lever in any position between the closed position and the first notch. The door (a) is held in any position through the cam (d), and the bracket (c) secured to the spring loaded door (b).



When control lever is moved down to second notch, the door (a) is fully opened and the cam (d) releases the door (b) which, under the action of the spring, (r) opens. A full flow of unheated fresh air enters through the louvers and the duct toward the floor of the car.



### Radio Installation

- 1 - Protect the front seats with covers.
- 2 - Disconnect the battery by loosening (two turns) the wing nut of the ground terminal.
- 3 - Remove the under dash panels.
- 4 - Remove the cover trimplate by cutting the four securing rivets.



- 5 - Remove the front part of the heater housing by removing two screws, one on each side of the housing.
- 6 - Using the trimplate as a template, place it in front of dash opening and mark where to file the dash for the radio bushings.
- 7 - Remove knobs from radio.
- 8 - Holding radio in place, position trimplate cover, radio shafts. Secure with hex nuts.
- 9 - Replace knobs.
- 10 - Support rear part of the radio with a bracket.
- 11 - Connect the radio to #2 fuse terminal.
- 12 - Replace heater housing.
- 13 - Install the speaker on the rear deck panel by positioning the speaker under a cut out and drilling four mounting bolt holes. Cut out the trim and tape the edges of the hole.
- 14 - Replace under dash panels.

## Antenna Installation

The antenna may be installed on the right front fender following carefully these specifications:

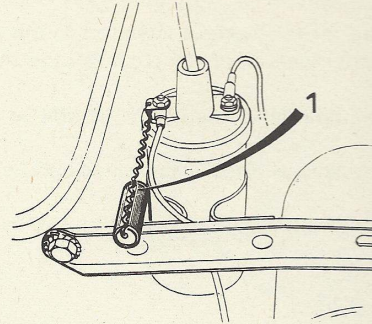
- 5½ inches on the crease of the fender from the rear edge at the door.
- ¾ inch from the crease towards the edge of the cowl grille.

## Suppressors

Suppressors should only be used if needed. Try the radio first without additional condensers.

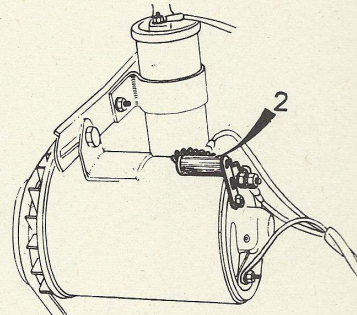
## Coil:

Install a .50 microfarad capacity condenser (1) connected to the feeding terminal (wire #2) of the coil.



## Generator:

Install one condenser of same capacity connected to the armature terminal (wire #7) of the generator.



**NOTES:** Condensers must be carefully grounded.

*Do not connect a suppressor in series with the high tension coil or spark plug wires.*

## Roof Rack

The roof of the 404 is fitted with four rack mounting pads.

In order to install the roof rack, remove the center plug of each mounting pad, and secure the luggage carrier with four bolts of 8 x 125 metric size. The roof rack is available from the distributor.



## ACCESSORIES

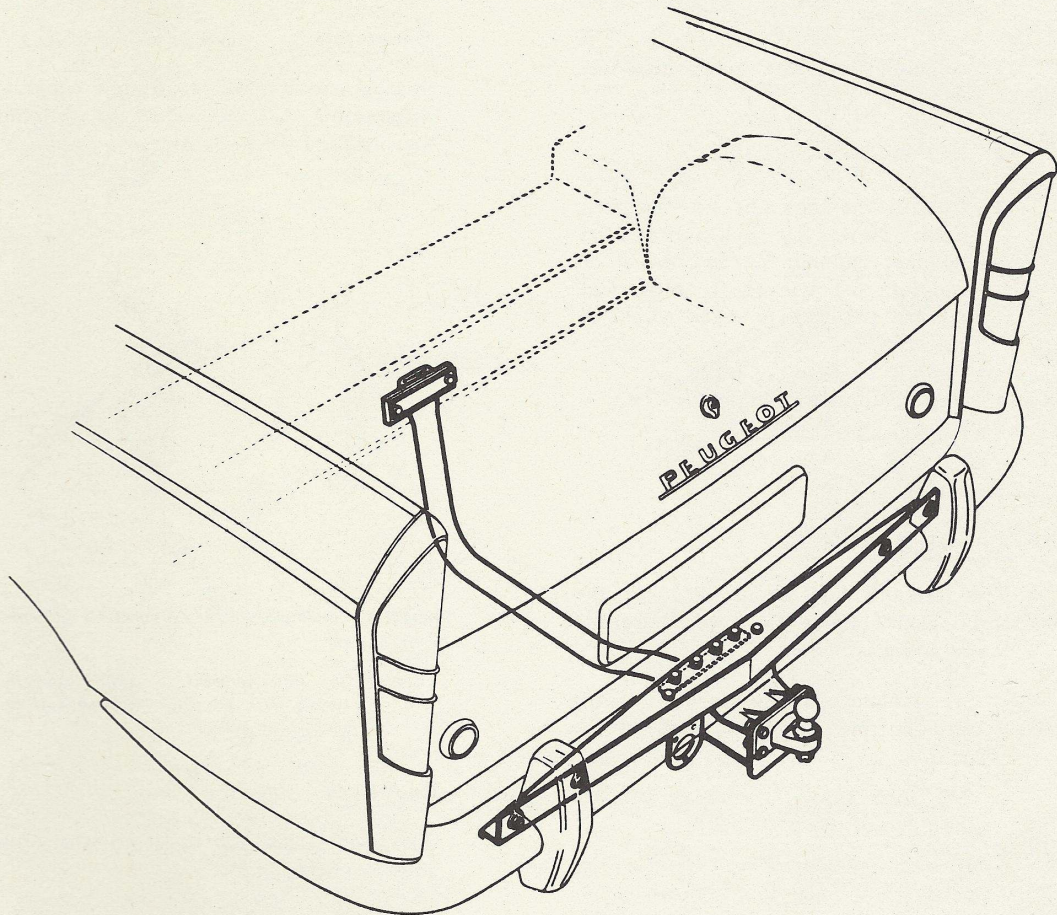
## TRAILER HITCH

The trailer hitch is mounted to the rear cross member, the bumper attachment bolts with an arm extending to the floor behind the rear axle.

The hauling capacity of the 404 is 1900 lbs.

The trailer hitch attachment can be ordered through the distributor.

The dimensions are given on the next pages to have the trailer hitch locally manufactured.

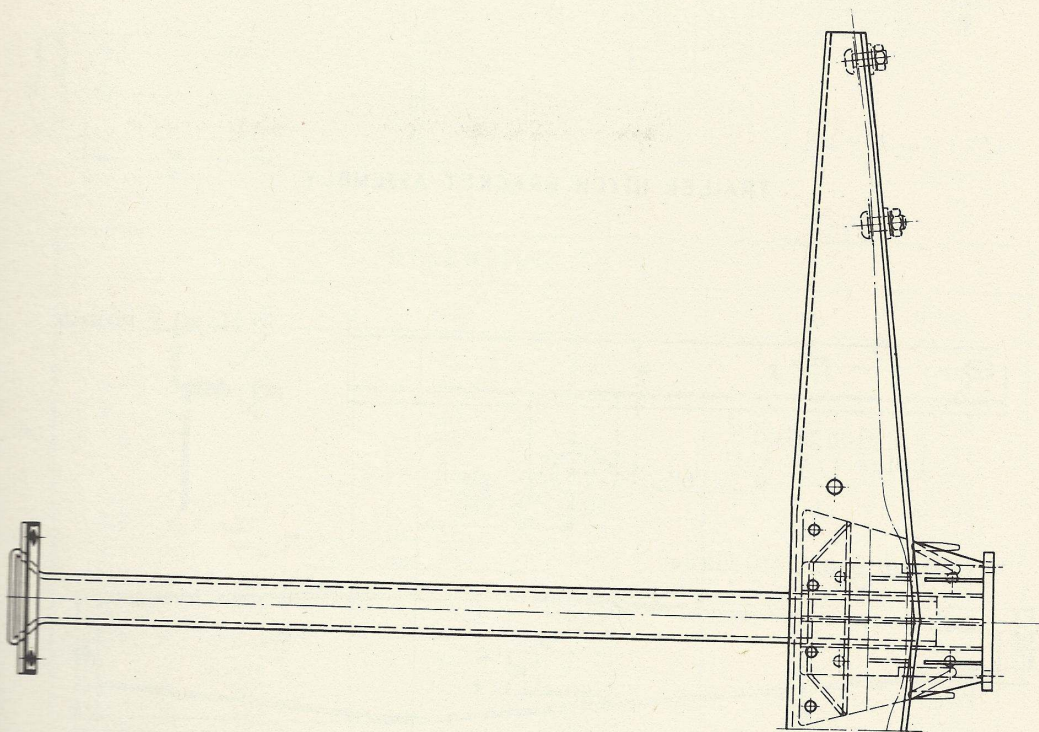
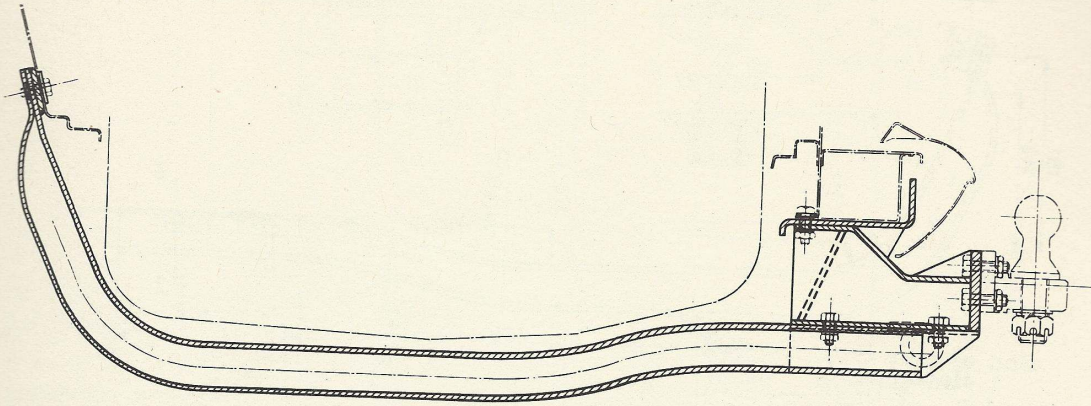




# ACCESSORIES

13-9

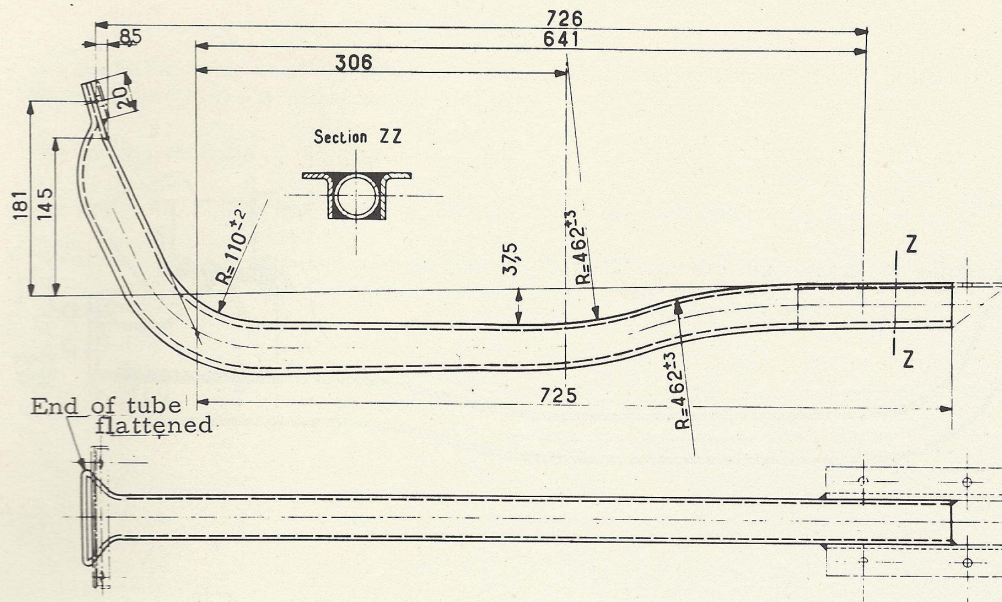
## TRAILER HITCH ASSEMBLY



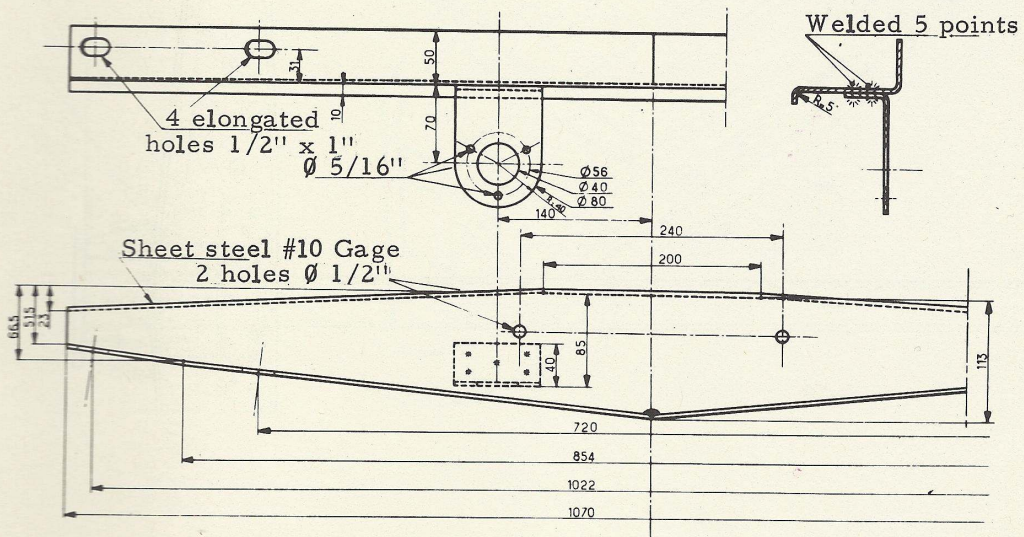


## ACCESSORIES

## EXTENSION ARM ASSEMBLY



## TRAILER HITCH BRACKET ASSEMBLY

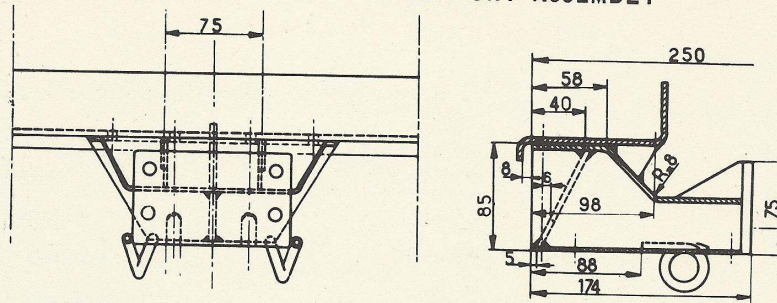




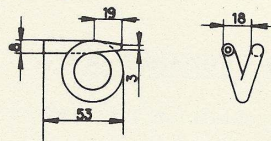
# ACCESSORIES

13-11

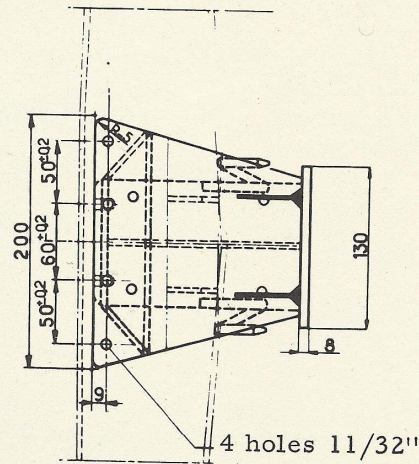
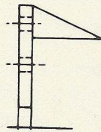
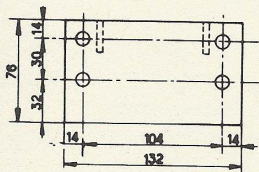
## TRAILER HITCH SUPPORT ASSEMBLY



## HOOK FOR SAFETY CHAINS



## BALL JOINT MOUNTING PLATE



## DIMENSION CHART

| m.m. | INCH     | m.m. | INCH    | m.m. | INCH     |
|------|----------|------|---------|------|----------|
| 3    | = .118   | 32   | = 1.259 | 113  | = 4.448  |
| 5    | = .196   | 37.5 | = 1.476 | 130  | = 5.118  |
| 6    | = .236   | 40   | = 1.574 | 132  | = 5.196  |
| 7.5  | = .295   | 50   | = 1.968 | 140  | = 5.511  |
| 8    | = .314   | 51.5 | = 2.027 | 145  | = 5.708  |
| 8.5  | = .334   | 53   | = 2.086 | 174  | = 6.850  |
| 8.7  | = .342   | 56   | = 2.204 | 181  | = 7 1/8  |
| 9    | = .354   | 58   | = 2.283 | 200  | = 7.874  |
| 10   | = .393   | 60   | = 2.362 | 240  | = 9.448  |
| 12   | = .472   | 66.5 | = 2.618 | 250  | = 9.842  |
| 13.5 | = .531   | 70   | = 2.755 | 306  | = 12.047 |
| 14   | = .551   | 75   | = 2.952 | 462  | = 18.188 |
| 18   | = .708   | 76   | = 2.992 | 641  | = 25.236 |
| 19   | = .748   | 80   | = 3.149 | 720  | = 28.346 |
| 20   | = .787   | 85   | = 3.346 | 725  | = 28.543 |
| 23   | = .905   | 88   | = 3.464 | 726  | = 28.582 |
| 27   | = 1 1/16 | 98   | = 3.858 | 854  | = 33.621 |
| 30   | = 1.181  | 104  | = 4.494 | 1022 | = 40.236 |
| 31   | = 1.220  | 110  | = 4.330 | 1070 | = 42.125 |



## LUBRICATION AND MAINTENANCE

14-1

### Contents

Section 14

|   |      |
|---|------|
| Recommended Lubricants and Fluids ..... | 14-1 |
| Pre-Delivery Inspection .....           | 14-2 |
| 600-Mile Inspection .....               | 14-3 |
| Periodic Maintenance                    |      |
| 2,000-Mile Service .....                | 14-4 |
| 4,000-Mile Service .....                | 14-5 |
| 8,000-Mile Service .....                | 14-5 |

### RECOMMENDED LUBRICANTS AND FLUIDS

Major brands of lubricants and fluids are advised for use in Peugeot products.

Esso, Enco, and Atlas products are installed by the Peugeot factory, in all new vehicles.



ENGINE: SAE #20W-40. Oil companies may use other systems of identifying multi-grade oils: Esso #3, Enco #3. SAE #10W-30 may be used during periods of sub-freezing temperatures.

TRANSMISSION: SAE #40 or #30  
SAE #90 may also be used in warm climate conditions only.

DIFFERENTIAL: SAE #90 EP or multi-purpose hypoid.

WATER PUMP should be oiled with engine oil; never use grease or pressure equipment.

CLUTCH THROWOUT BEARING: Engine oil, check cup at oil changes.

OIL BATH AIR CLEANER: Engine oil, only to mark.

WINDSHIELD WIPER SHAFTS: Light engine oil.

GENERATOR: Engine oil.

BRAKE FLUID: Lockheed HD 31 or HD21B (SAE 70R3 or 70R1)

SHOCK ABSORBERS: Shock absorber fluid.

ANTI-FREEZE: Permanent (Ethylene Glycol base)



## LUBRICATION AND MAINTENANCE

Pre-Delivery Inspection

Before a new vehicle is delivered to the purchaser, a work sheet called "Preparation of the 403 and 404 Models" should be followed and signed by the servicing mechanic. This sheet should become a part of the owner's permanent record in the dealership Service Department.



PEUGEOT

## PREPARATION OF THE 403 AND 404 MODELS

WORKSHOP: \_\_\_\_\_

DATE OF PREDELIVERY SERVICING: \_\_\_\_\_ VEHICLE NO: \_\_\_\_\_

1. Remove ignition and trunk keys from choke cable under hood and put into glove compartment. ☐
2. Disconnect battery ground cable (unscrew wingnut: two turns). ☐
3. Clean engine, with standard solvent. ☐
4. Clean chromed and stainless steel parts. ☐
5. Connect battery ground cable and reset electric clock. ☐
6. Install side view mirror. ☐
7. Install sealed beams and front and rear light bulbs. ☐
8. Set headlight beam according to state requirements. ☐
9. Check all lights and turn signals. ☐
10. Check electrical circuit and equipment. ☐
11. Fill oil bath air cleaner up to index. ☐
12. Check engine sump oil level and fill if necessary. ☐
13. Check brake fluid level and fill if necessary. ☐
14. Check battery water level and fill if necessary. ☐
15. Check radiator water level and fill if necessary. Check antifreeze protection and record. ☐
16. Check windshield washer water level and fill if necessary. Check antifreeze solvent protection. ☐
17. Check windshield washers spray (and adjust jets, if necessary). ☐
18. Install windshield wipers. ☐
19. Check tightening of wheelnuts (torque - 45 foot pound). ☐
20. Install hub caps and tighten bolt moderately. ☐
21. Check tire pressure: ☐  
                                     404 front 20 lbs; rear and spare: 23 lbs
22. Install license plate brackets. ☐
23. Install front and rear carpets. ☐
24. Check the spare wheel and its strap, tool kit, jack, starting crank, wheel lug wrench and spare fuses in box. ☐
25. Wash, dry and polish car. ☐
26. Final inspection - Remove seat covers. ☐

\_\_\_\_\_  
 Servicing Attendants Signature



**The 600-Mile Inspection**

When the owner has driven his Peugeot 600 miles, he will return to the dealership and present his service coupon to receive his free 600-mile inspection. The work included in this inspection is outlined on the back of the service coupon.

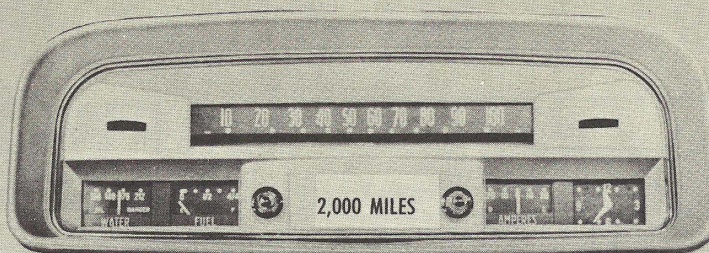
| SERVICE COUPON  |  |
|---|--|
| Warranty card No.   | A 0019                                       |
| Vehicle type  | Serial No.                                   |
| Selling Dealer Stamp:   |  |
| Name of owner of vehicle:   |  |
| Address:  |  |
| Delivery date   |  |
| Warranty expires 12 months after delivery to owner or at 12,000 miles whichever comes first.  |  |
| Upon completion of work owner is asked to sign the space below:   |  |
| Inspection described on the reverse has been carried out to my satisfaction.  |  |
| (Signature of owner).   |  |
| The space below is to be completed by the Servicing dealer. He then returns the coupon to his Distributor. Failure to do so voids warranty. |  |
| Date of Service:  | Date Stamp and Signature of Servicing Dealer |
| Mileage   |  |

| 600 MILES INSPECTION  |   |
|---|---|
| SERVICING/RETIGHTENING/ADJUSTING  | <b>GREASING</b><br>Drain while warm the engine sump (clean oil filter), gear box and rear axle and refill with fresh oil.<br>Pressure grease all points in greasing chart.<br>Lubricate the distributor with oil, the accelerator linkages, all other linkages and body hinges.<br>Check the level of Lockheed reservoir. |
|   | <b>Engine</b><br>Check: The torque of cylinder head bolts and the rocker shaft bearings, adjust tappets, check tension of fan belt, check tightness of manifold nuts.<br>Clean: The carburetor and air cleaner.<br>Check: Mixture and idle.   |
|   | <b>Electricity</b><br>Check distilled water in batteries and complete charge if necessary. Clean, retighten the terminals.<br>Check charge of generator.<br>Clean and adjust plugs and distributor contact points.  |
|   | <b>Chassis</b><br>Check front spring shackles and retighten. Also attaching bolts of shock absorbers and exhaust system, check brake lines and bleed if necessary.<br>Inflate tires to correct pressure and retighten road wheel nuts.  |
| <b>Body</b><br>Adjust door catches and door hinges if necessary. Generally retighten all bolts. |   |
| TEST  | Test the controls of the vehicle for the inspection of the following points:<br>Test of Brakes.<br>Free play of clutch pedal.<br>Ignition timing.<br>Electrical installation (windshield wipers, headlamps, ammeter, horns and adjust if necessary).  |
| Grease and oils are chargeable to owner.  |   |



PEUGEOT  
404

# MAINTENANCE



# RECORD BOOK

## Periodic Maintenance

By following the Maintenance Record Book given with every new Peugeot, an owner can assure the maximum life and efficiency of each part of his vehicle.

Please note that, at 2,000 mile intervals, a basic lubrication and inspection is prescribed.

### 2000 MILE MAINTENANCE

The services, inspections and adjustments as outlined on the 2,000 miles maintenance certificate have been performed by our factory trained personnel.

Date.....

Servicing Dealer.....

Mechanic.....

### PEUGEOT

## MAINTENANCE CERTIFICATE

### Work to be performed

#### 1. Drain and Refill

Engine oil  
Clean Oil Filter

#### 3. Recommended Lubrication

See chart or owner's manual

### 2,000 MILES

#### 2. Check Level

Transmission  
Rear axle  
Brake master cylinder fluid  
Radiator  
Windshield washer jar  
Battery

#### 4. Adjustments

Tire inflation :  
Front 20  
Rear and Spare 23



## LUBRICATION AND MAINTENANCE

14-5

At each 4,000 mile period, additional adjustments are included, plus draining and refilling the transmission and rear axle. This inspection may be considered a minor tune-up.

### 4000 MILE MAINTENANCE

The services, inspections and adjustments as outlined on the 4,000 miles maintenance certificate have been performed by our factory trained personnel.

Date.....  
Servicing Dealer.....  
.....  
Mechanic:.....

PEUGEOT

### MAINTENANCE CERTIFICATE

#### Work to be performed

#### 1. Drain and Refill

Engine oil  
Clean oil filter  
Transmission  
Rear axle  
Air Cleaner  
—after cleaning

#### 2. Check Level

Brake master cylinder fluid  
Radiator  
Windshield washer jar  
Battery

#### 3. Recommended Lubrication

See chart or owner's manual

#### 4. Adjustments

Clutch pedal travel ( $\frac{3}{4}$ "  
Brakes—hand brake  
Fan belt  
Spark plug gap (.025)  
Point gap (.020)  
Headlights and horns  
Rotate wheels  
Balance front wheels on vehicle  
Tire inflation : Fr. R. & SP.  
20 23

4,000 MILES

At every 8,000 miles (8; 16; 24; 32 thousand miles), a major tune-up and inspection is performed. This maintenance includes the work of the 2,000 and 4,000 mile inspections, plus carburetor cleaning, cylinder head torquing, valve setting and several other adjustments.

### 8000 MILE MAINTENANCE AND INSPECTION

The services, inspections and adjustments as outlined on the 8,000 miles maintenance certificate have been performed by our factory trained personnel.

Date.....  
Servicing Dealer.....  
.....  
Mechanic:.....

PEUGEOT

### MAINTENANCE CERTIFICATE

#### Work to be performed

#### 1. Drain and Refill

Engine oil  
Clean oil filter  
Transmission  
Rear axle  
Air cleaner—after  
cleaning

#### 2. Check Level

Brake master cylinder fluid  
Radiator  
Windshield washer jar  
Battery

#### 3. Clean

Carburetor  
Fuel pump

#### 4. Recommended Lubrication

See chart or owner's manual

#### 5. Adjustments

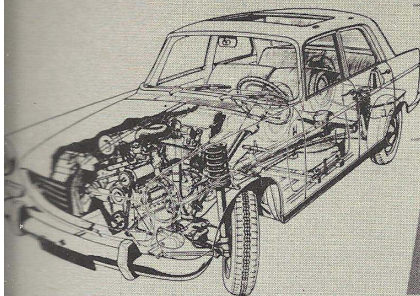
Tighten Exh. manifold and  
carburetor  
Torque cyl. head (60 lbs. cold)  
Valves. Int: .004 Exh: .008 (cold)  
Point gap: .020  
Ignition timing  
Spark plug gap .025 (replace if  
necessary)  
Clutch pedal travel ( $\frac{3}{4}$ "  
Brakes - hand brake  
Headlight, horns  
Fan belt  
Rotate wheels  
Balance wheels on vehicle  
Tire inflation : Fr. R. & SP.  
20 23

8,000 MILES

#### 6. Road Test

At appropriate times during the year, seasonal special services may be offered by the dealership to prepare the vehicle for the coming weather conditions.

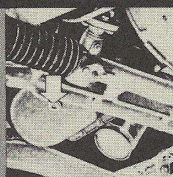




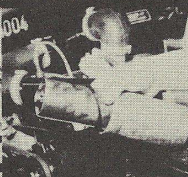
# PEUGEOT MAINTENANCE

## ENGINE

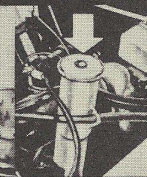
SUMP CAPACITY 4 1/4 QTS.  
SUMMER SAE 40  
SAE 30  
WINTER SAE 20



DRAIN SUMP



CLEAN OIL FILTER

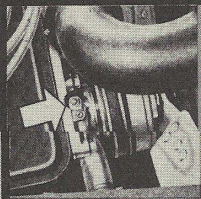


REFILL ENGINE

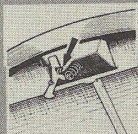
## TRANSMISSION

MOT

## LUBRICATE WITH OIL CAN



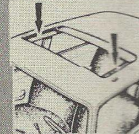
WATER PUMP



HOOD CATCH



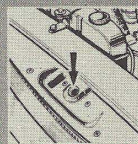
HOOD HINGES



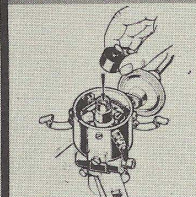
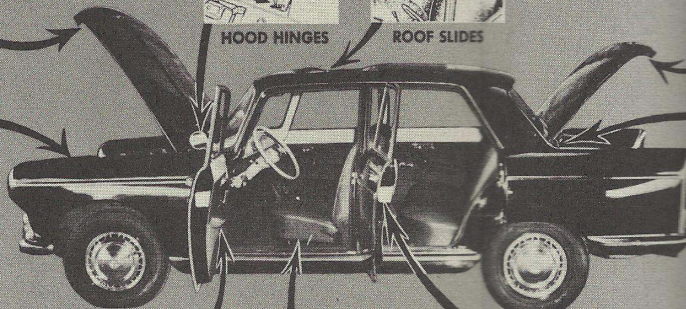
ROOF SLIDES



CLUTCH THRUST BEARING



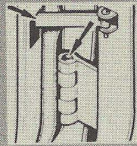
HOOD CATCH MECHANISM



DISTRIBUTOR



MECHANICAL LINKAGE  
HANDBRAKE  
GEAR SHIFT



DOOR STOPS



SEAT SLIDES



DOOR LOCKING RATCHET



DOOR HINGES



HINGE FITTINGS



DOOR HANDLE PUSH KNOB

EVERY  
**2,000**  
MILES

**2,000**  
MILE  
SERVICE

PLUS TRANSMISSION

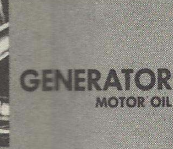
CAPACITY 1 1/4 QTS.  
MOTOR OIL SAE 40



DRAIN AND REFILL



DRAIN AND REFILL



GENERATOR  
MOTOR OIL



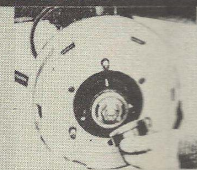
REAR BEARING

**4,000**  
MILES

**2,000**  
**4,000**  
MILE  
SERVICE

PLUS FRONT WHEEL BEARINGS

REMOVE DUST CAPS ONLY



1/2 OZ. MULTIPURPOSE GREASE

SPARK PLUGS

REPLACE IF NECESSARY

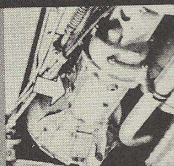


# LOT 404

## MAINTENANCE CHART

### TRANSMISSION

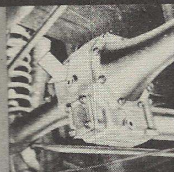
CHECK LEVEL  
MOTOR OIL SAE 40



CHECK OIL LEVEL

### REAR AXLE

CHECK LEVEL  
SAE 90 or  
SAE 90 MULTIPURPOSE



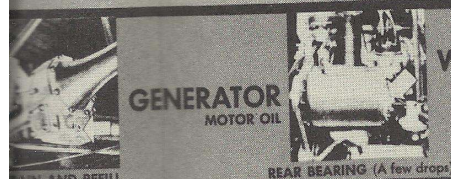
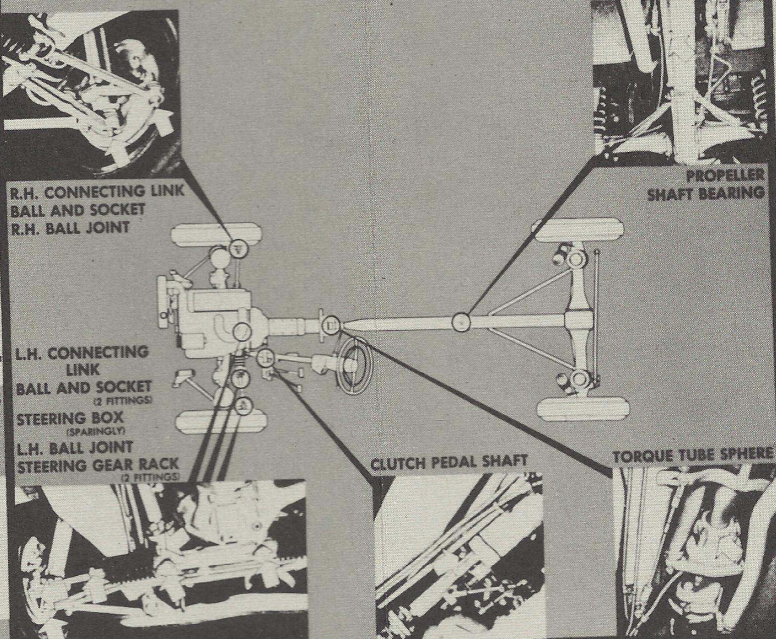
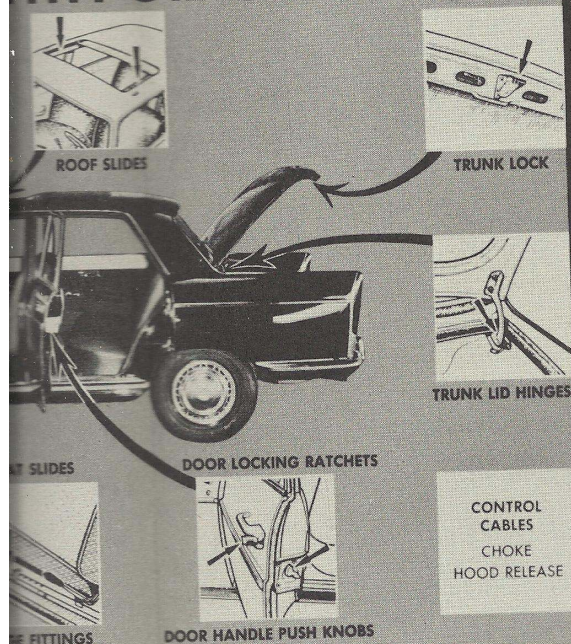
CHECK OIL LEVEL

### CHECK

- ✓ RADIATOR LEVEL
- ✓ BATTERY LEVEL
- ✓ WINDSHIELD WASHER
- ✓ TIRE PRESSURES
- FRONT 20 REAR 23

### WITH OIL CAN

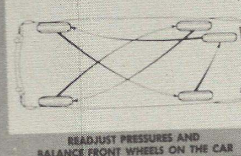
### PRESSURE LUBRICATION



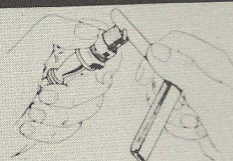
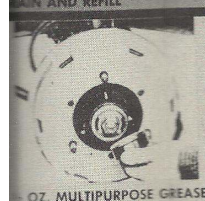
WINDSHIELD  
WIPERS  
MOTOR OIL



ROTATE  
TIRES



ENGINE  
MINOR  
TUNE-UP



ENGINE MAJOR TUNE-UP