

15 - MISCELLANEOUS

SPECIAL TOOLS AVAILABLE AT SUPPLIERS'	203
SPECIAL TOOLS TO MANUFACTURE IN THE WORKSHOP	215
TIGHTENING TORQUES	221
VEHICLES IDENTIFICATIONS	222

IDENTIFICATION OF THE REFERENCE MARKS

The reference marks on special tools are made of 5 ciphers figures and, eventually one letter : e.g 8.0102 Y.

FIGURES :

8.0102 : Peugeot reference for the manufacturer.

8.0102 : These two ciphers correspond to the utilization class of the tool

01	Engine
02	Clutch
03	Gearbox
04	Propeller shaft
05	Rear Axle
06	Front Axle
07	Steering gear
08	Brakes
09	Suspension
10	Wheels and tires
11	Frame or body shell
12	Electricity
13	Bodywork
14	Lubrication
15	Miscellaneous

8.0102 Ref. number in the corresponding class.

LETTER FOLLOWING FIGURE :

Either of these two cases may occur :

1° - Letters from the alphabet as read in the reverse order (Z Y etc) indicate that this tool or the original composition of the tool has been modified e.g :

Ist alteration 8.0102 Z

2nd alteration 8.0102 Y

2° - Letters from the alphabet as read in the normal order apply to individual parts or tools, components of a definitive assy and which can be ordered separately. e.g

8.1002 Y.A & 8.0102 Y.B

Special composition to change equipment

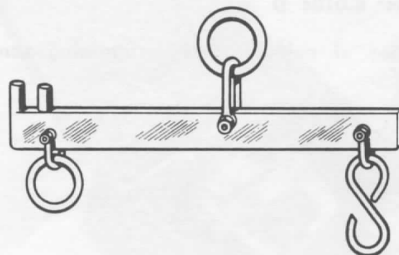
8.0102 into 8.0102 Y

THESE TOOLS WILL BE ORDERED EITHER FROM

FENWICK, 8 Rue de Rocroy, PARIS 10° or from

T.U.P.A.C 18 Boulevard National, La Garenne (Seine)

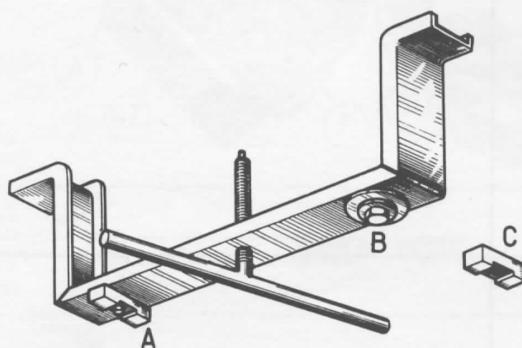
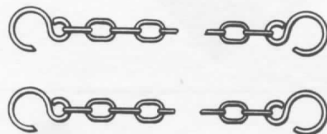
1 - ENGINE



N° 8.0102 Y

Engine hoisting apparatus

B - 2 symmetrical chains

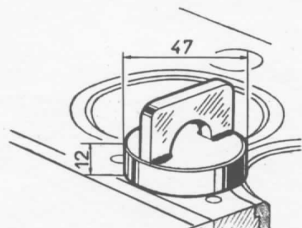


N° 8.0103 Z

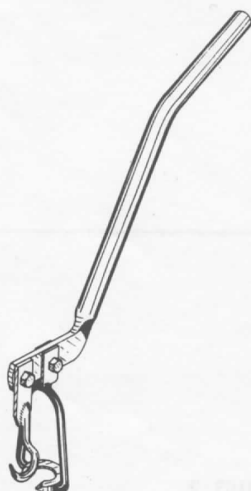
Engine and gear box support jack with fitting ends.

C - Stub for backing under clutch housing.

NOTE - The tool references shown on the figures and of which no mention is made in the text are of no use for the 404.

**N° 8.0104 D**

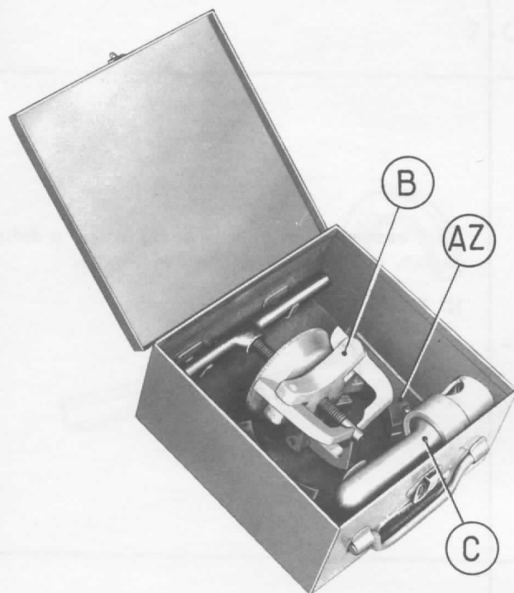
Set of cylinderliners maintaining screws (2).

**N° 8.0105**

Valve removing and refitting tool.

**N° 8.0106 Z**

Spark plug wrench length 360 mm. Hexagon external dimension 27,5 mm (10,827 inch).

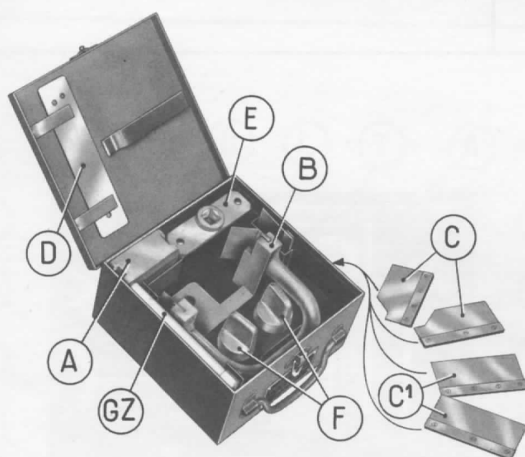
**N° 8.0107 Y**

Tool chest for water pump with magnetic clutch type fan & for TMD water pump.

AZ - Jaws for pulley.

B - Turbine extractor.

C - AD seal remover.

**N° 8.0110 Z**

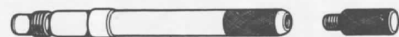
Tool chest for engine

B - Tool for lateral seals installation.

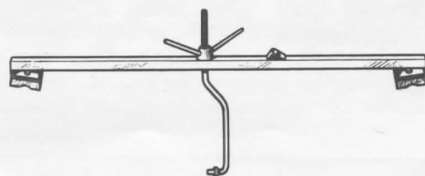
C1 - Spare shims for 404

D - Thickness gauge 0,5 mm.

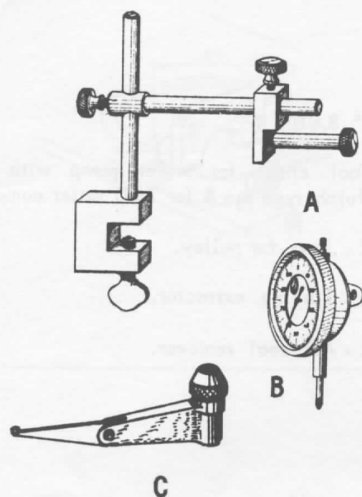
GZ - Support fitting, dial indicator (with threaded end. 7 mm dia. thread 100).

**N° 8.0115**

Set of cylinderhead guides (2).

**N° 8.0116**

Engine hang-support cross bar.



This assembly, originally designed for a definite use, can be used on the 404 engine.

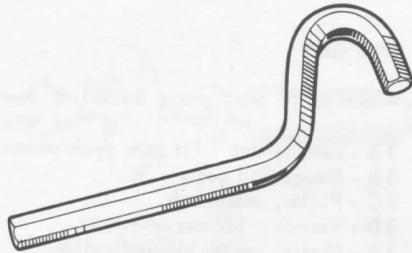
N° 8.0504

Dial gauge

A Support

B Gauge

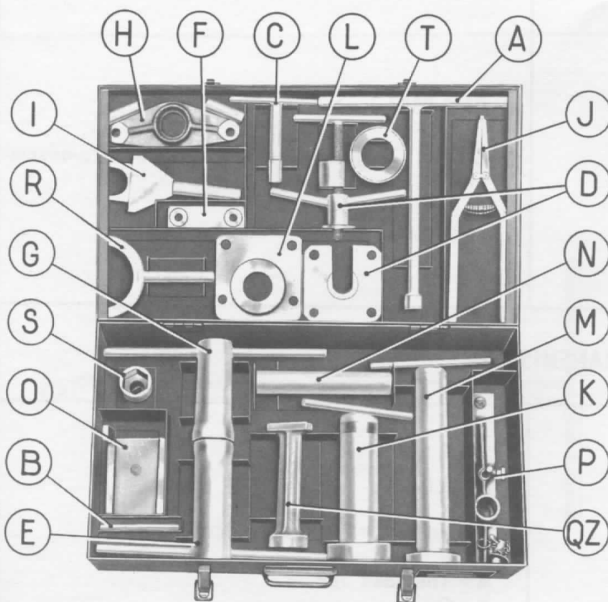
2 - CLUTCH



N° 8.0202

Wrench for clutch housing nut.

3 - GEAR BOX

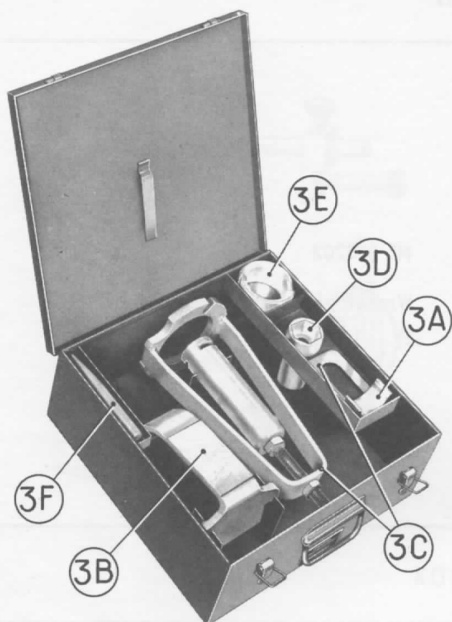


N° 8.0301 Y

Tool chest for gear box.

- A - Wrench, clutch housing dismantling
- B - Fitting end-Universal joint
- C - Puller-speedometer control
- D - Puller-overdrive gear housing
- G - Wrench main shaft locknut
- J - Pliers - circlips
- K - Locating plate-mainshaft
- L - Locating plate-mainshaft
- M - Puller centre bearing (with internal protective fitting end).
- N - Spacer for rear bearing intermediate
- P - Gauge-rear bearing clutch.
- QZ - Plate-depth gauge-rear bearing (53 dia.)

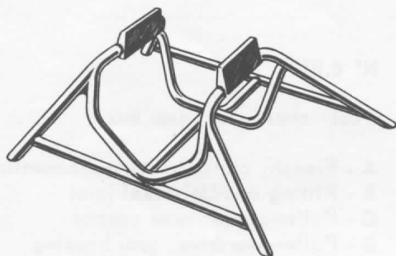
NOTE - The tools which are not listed in the description are used for C2 gearbox only.



N° 8.0302

Addition to tool chest 8.0301 Y for gearbox.

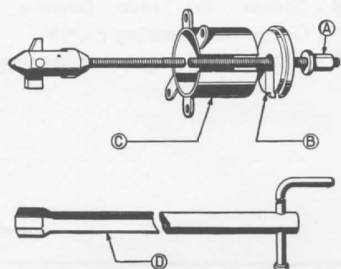
- 3 A - Setting fork - 1st gear sychromesh
- 3 B - Gauge 2nd gear.
- 3 C - Puller, mainshaft.
- 3 D - Wrench (32 mm a/c flat).
- 3 E - Shells, center bearing puller.
- 3 F - Tool, nuts locking.



N° 8.0304

Cradle C3 gearbox dismantling and re-assembling.

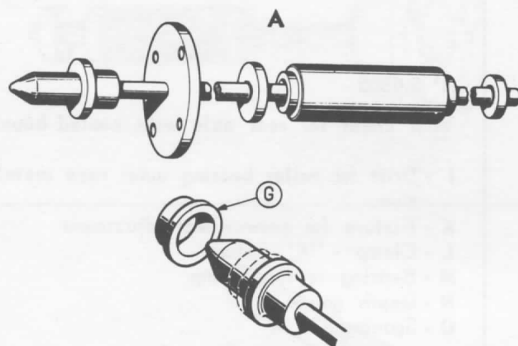
4 - TRANSMISSION



N° 8.0402

Puller, propeller shaft central bearing.

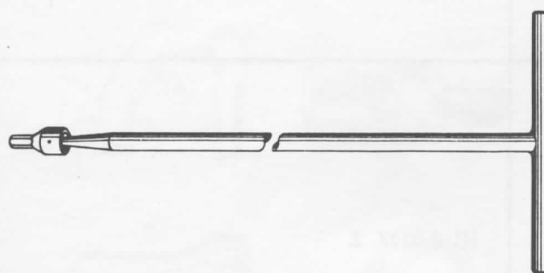
- A - Threaded rod.
- B - Cover.
- C - Spacer
- D - Handle



N° 8.0403 Z

Tool for fitting prop. shaft centre bearing

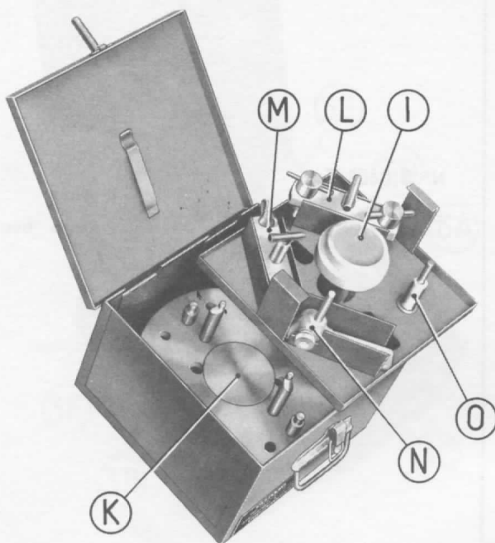
G - Spacer - 31 mm dia. shaft.



N° 8.0406

Wrench torque tube ball joint nut.

5 - REAR AXLE



N° 8.0505

Tool chest for rear axle with sealed housing

I - Drift for roller bearing outer race installation.

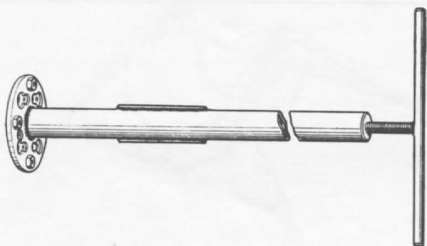
K - Fixture for crownwheel adjustment

L - Clamp - "K" fixture

M - Bearing resting clamp

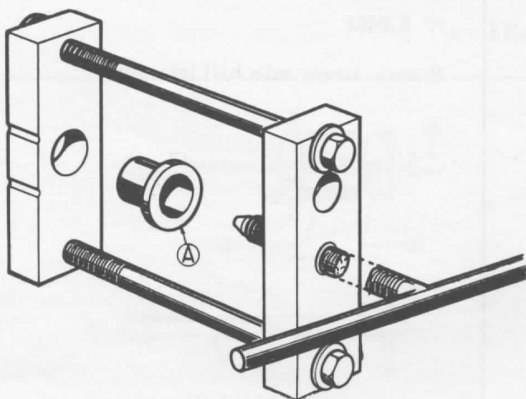
N - Depth gauge

O - Spacers (3)



N° 8.0507 Z

Puller outer axle shaft bearing and hoop ring

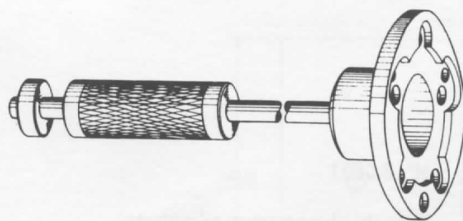


N° 8.0517 Z

Tool for wheel shaft bearing hoop positioning

A - Ring

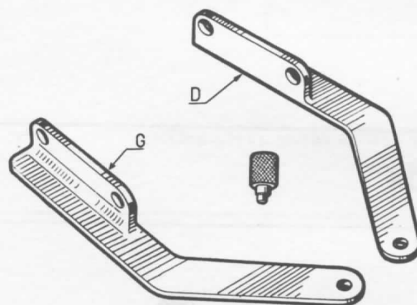
6 - FRONT AXLE



N° 8.0601

Puller, front hub

Wheel shaft puller.

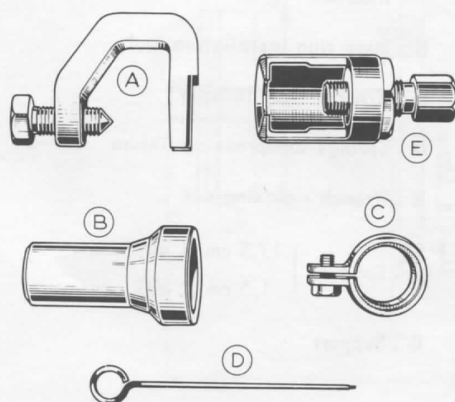


N° 8.0605

A - Set of 2 rules, L.H. and R.H.

B - Control cam axle.

7 - STEERING GEAR



N° 8.0703

Composition of the Steering gear tool equipment

A - Steering wheel extractor

B - Socket for ball head locknut

C - Ball head adjustment collar

D - Guide - ball head cap positioning

E - Connecting ball-head puller.

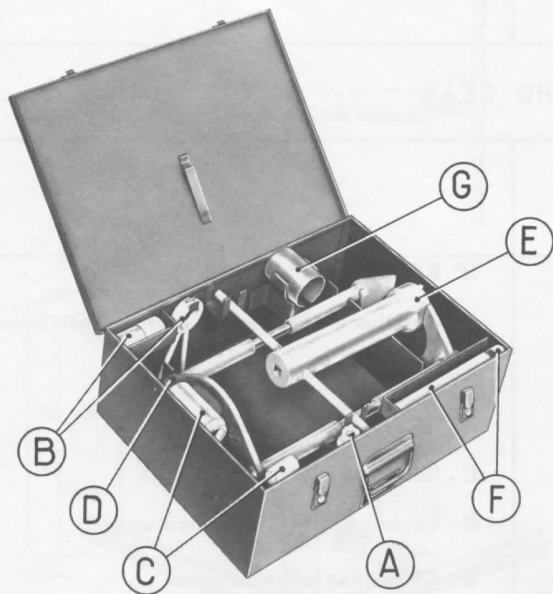
8 - BRAKES



N° 8.0801

Wrench - brake jaws adjustment.

9 - SUSPENSION



N° 8.0902

Tool kit for front suspension.

A - Notched wrench. Lower ball head locknut fixation.

B - Snap ring installation tool

C Wrench - rod locknut

D - Springs compressing fixture

E - Wrench - closing nut

F - Spacers { 17,5 cm (1 off)
1,5 cm (1 off)

G - Support

Holes $\varnothing 10$

250

70 97 116 97 70

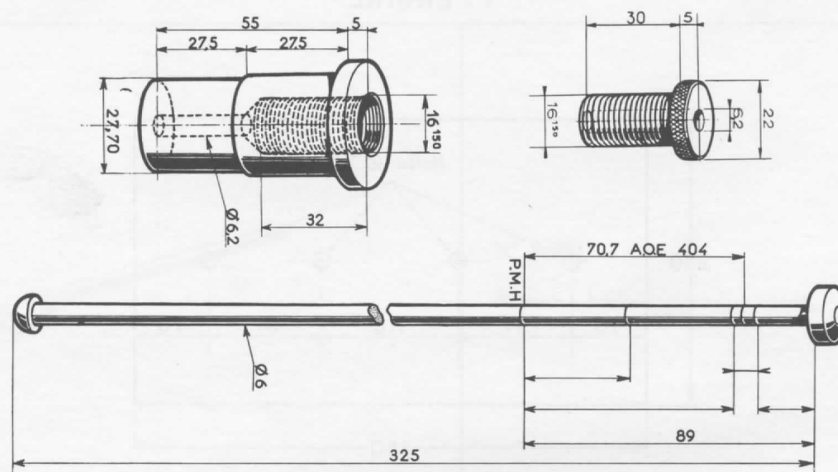
450

Technical drawing of a mechanical assembly, showing a side view and a top view. The drawing includes the following dimensions:

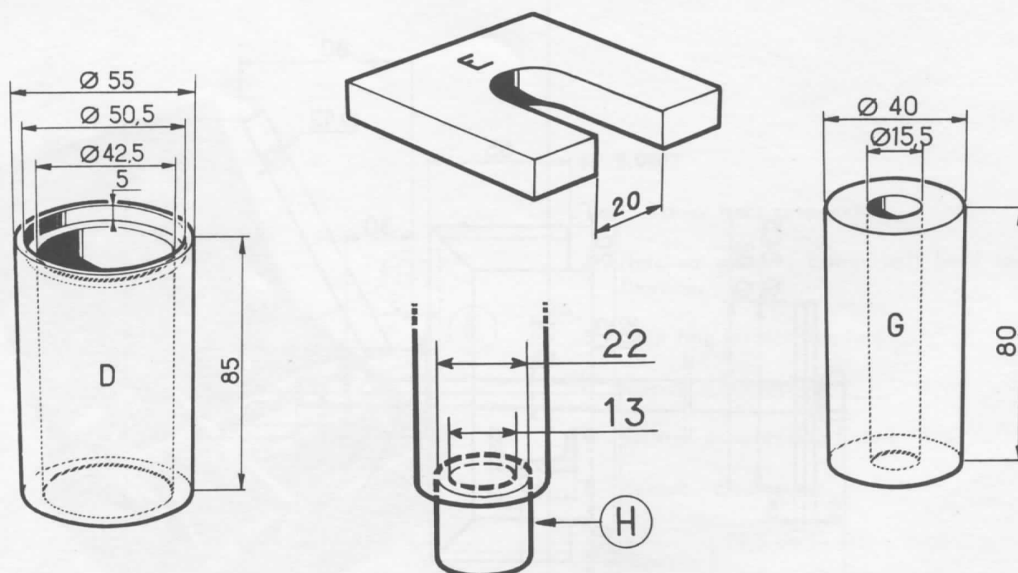
- Overall width: 320
- Overall height: 250
- Top view dimensions:
 - Left section width: 5
 - Left section height: 5
 - Left section diameter: $\varnothing 84.5$
 - Left section diameter: $\varnothing 88$
 - Right section width: 65
 - Right section height: 20
 - Right section diameter: $\varnothing 14$
 - Right section diameter: $\varnothing 40$
 - Right section diameter: $\varnothing 30$
 - Right section diameter: $\varnothing 40$
 - Right section diameter: $\varnothing 6$
 - Right section diameter: $\varnothing 12$
- Side view dimensions:
 - Top section width: 80
 - Top section height: 30
 - Top section diameter: $\varnothing 12$
 - Bottom section width: 150
 - Bottom section height: 20
 - Bottom section diameter: $\varnothing 40$
 - Bottom section diameter: $\varnothing 30$
 - Bottom section diameter: $\varnothing 6$
 - Bottom section diameter: $\varnothing 12$

Cylinderliner puller.

SPECIAL TOOLS TO MANUFACTURE ON THE SPOT



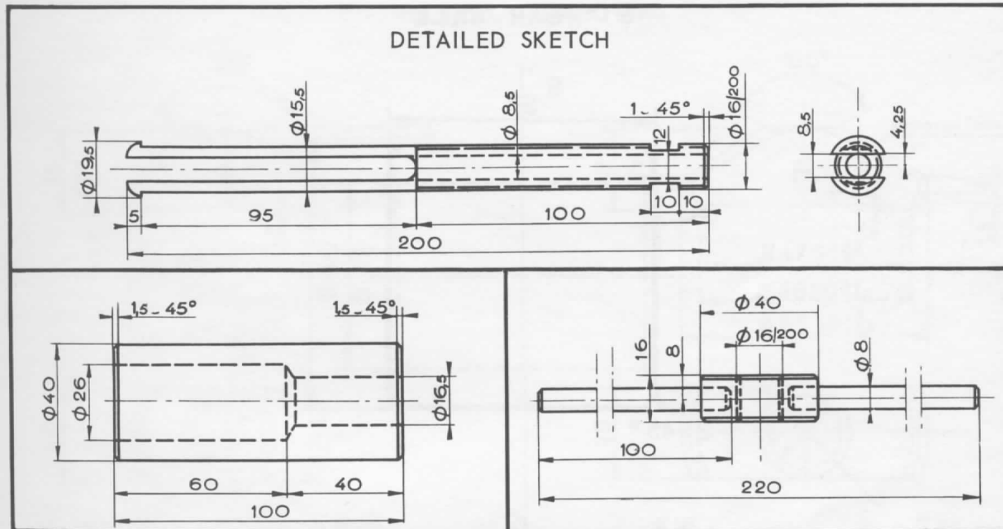
Timing adjustment check rod



Complementary tooling to toolkit 8.0107 Y

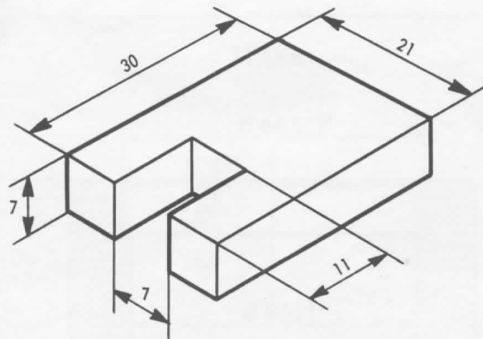
- D Spacer
- E Plate
- G Ring
- H Ring

DETAILED SKETCH



Puller, clutch location bushing

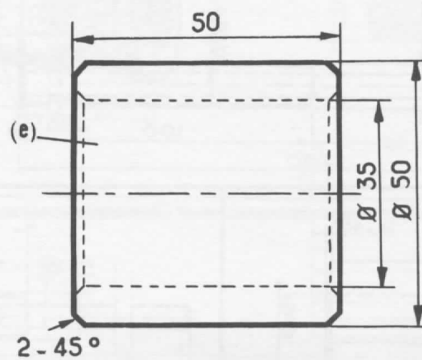
2 - CLUTCH



SPACER, Accelerator cable safety adjustment, Jaeger coupler.

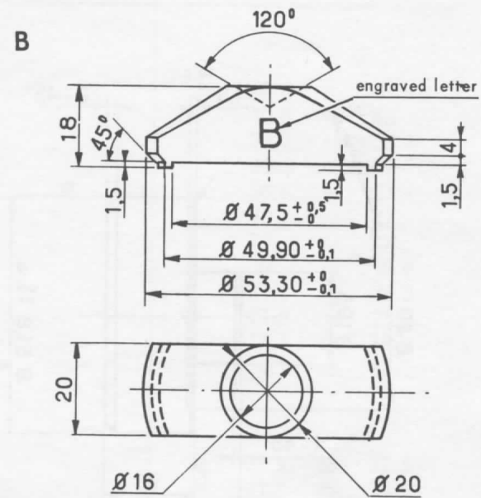
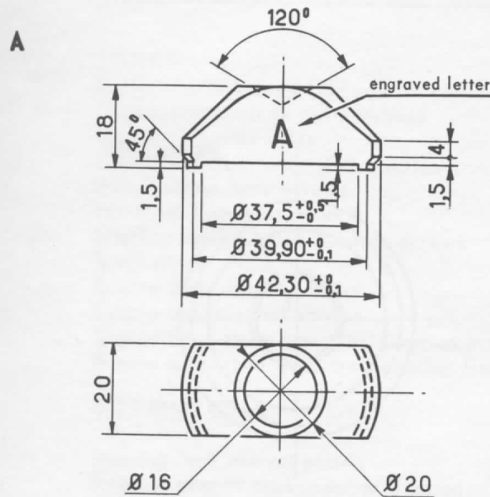
SPECIAL TOOLS TO MANUFACTURE
ON THE SPOT

5 - REAR AXLE

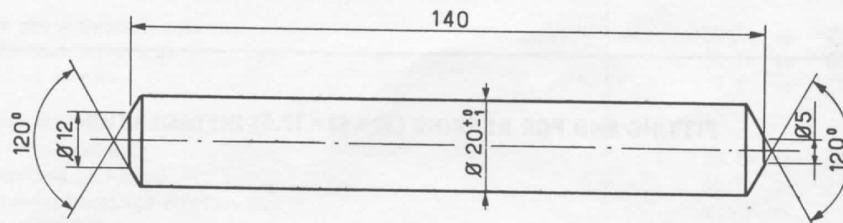


Spacer ring, wheel shaft bearing and hooping press installation.

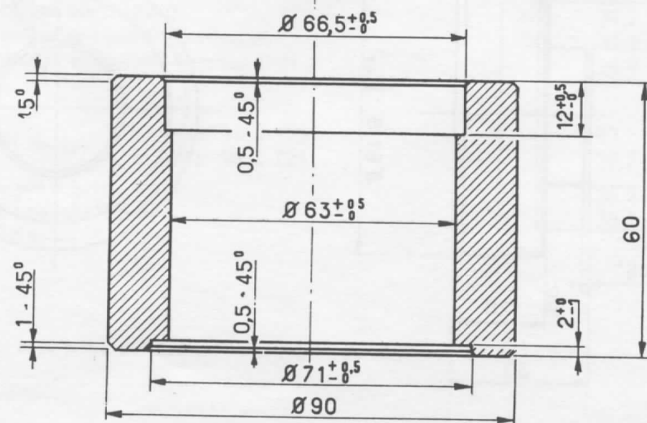
6 - FRONT AXLE
FITTING ENDS, DISMANTLING



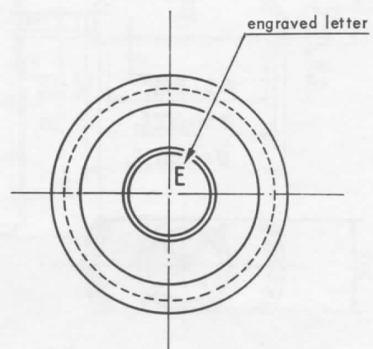
C DRIFT



D STAKE



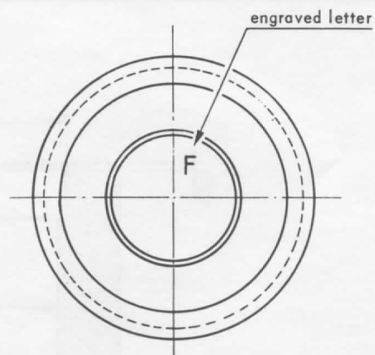
Technical drawing of a mechanical part, likely a shaft or tube, showing dimensions and tolerances. The drawing includes a cross-section view with a central hole. Key dimensions include: outer diameter $\varnothing 40$, inner diameter $\varnothing 19.5$, total length 51.8 ± 0.40 , and a section length of 30. Tolerances are specified as $+0.5/-0.5$ for a 1.5 dimension and $2-45^\circ$ for a chamfer. A "smoothed angle" is indicated on the top surface. A $1-45^\circ$ chamfer is shown on the bottom edge. A 20 dimension is also present.

**F**

Technical drawing of a mechanical part, likely a shaft or tube, showing dimensions and tolerances.

Key dimensions and tolerances:

- Outer diameter: $\varnothing 61,8 \pm 0,40$
- Inner diameter: $\varnothing 29,5$
- Total length: 50
- Section length: 30
- Chamfer on end of section: $2 - 45^\circ$
- Chamfer on side view: $1 - 45^\circ$
- Tolerance on section length: $2 \begin{smallmatrix} +0,5 \\ -0 \end{smallmatrix}$
- Feature: smoothed angle



TIGHTENING TORQUES

15

221

Description	Torque in ft. lbs	
ENGINE		
Cylinderhead screws (tallowed screws)	50.6	to 57.8
Rocker arm shaft on cylinderhead	10.8	to 18
Connecting rods bolts	30.7	to 34.3
Crankshaft counterweights fixation screws	43.3	to 47
Main bearing caps screws	50.6	to 57.8
Flywheel fixation screws	43.7	to 47
Starting handle catch fixation screws	72	to 87
Spark plugs	18	to 19.9
Engine front mount support	21.6	to 25.3
Engine rear support screws	21.6	to 25.3
Engine front stake (checker) fixation screw	14.5	to 18
Engine support to front crossmember fixation screw	36.1	to 43.3
STEERING GEAR		
Steering rack control pinion	28.9	to 32.5
Steering gear to crossmember fixation	21.6	to 32.5
Flector fixation bolt	5.4	to 9
BRAKES		
Brake plate fixation screws	39.7	to 47
Brake lines couplings	36.1	to 43.3
Bleeding screws	9.4	to 10.8
FRONT AXLE - SUSPENSION		
Connecting rod bolt	36.1	to 50.6
Correctiong ball head	36.1	to 39.7
Front hubs bearings fixation nut	maximum	7.23 (1)
Front wishbone arms assembling nut	21.6	to 28.9
Wishbone front arm to rear arm fixation axle	21.6	to 28.9
Front wishbone rear arm to crossmember fixation axle	59.8	to 65
Ball head casing to rack (steering gear side)	28.9	to 36.1
Stub axle ball head nut	28.9	to 36.1
Front shock-absorber closing nut	39.7	to 50.6
Front shock-absorber rod upper fixation nut	36.1	to 43.3
Front crossmember to bodyshell fixation bolt	28.9	to 43.3
REAR AXLE		
Differential shell bolts	dia. 11 X 125	43.7 to 54
	dia. 10 X 125	39.7 to 43.3
Stabilizer bar to yoke bolt	36.1	to 43.3
Stabilizer bar to bodyshell bolt	36.1	to 50.6
Wheel fixation axle.		43.3

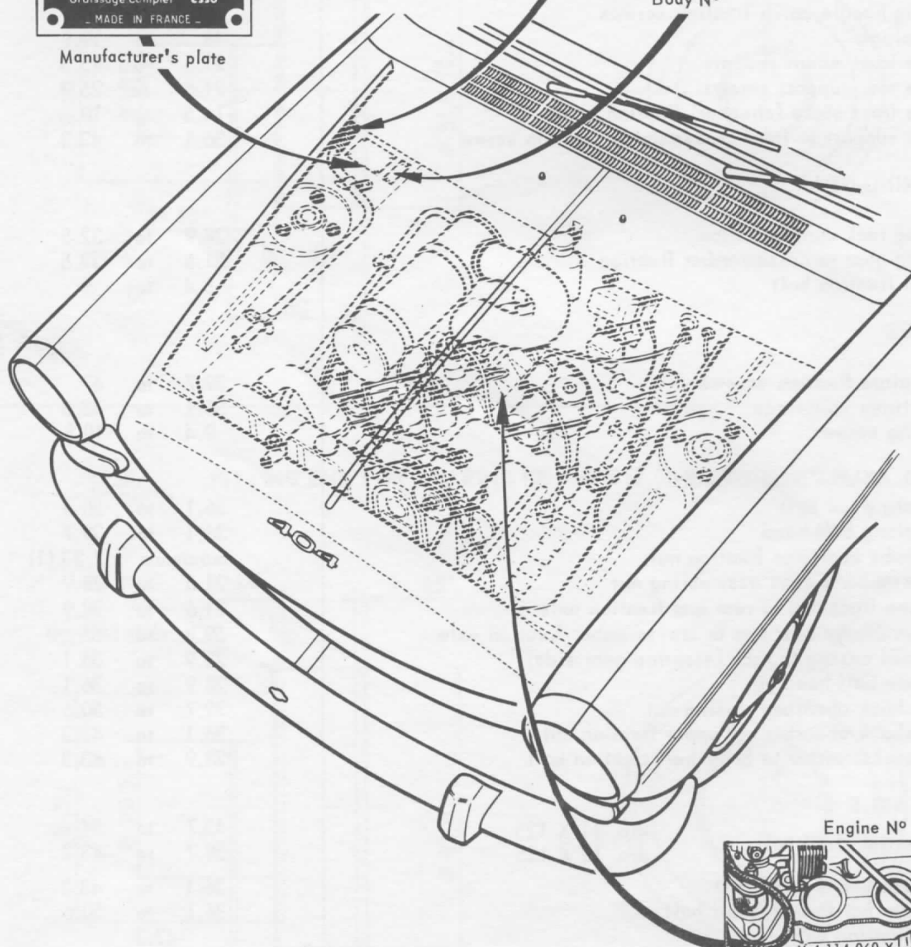
(1) Tighten first to 22 ft.lbs. Release and tighten again, definitely to 7.2 ft.lbs. - Safety

SOCIÉTÉ ANONYME des AUTOMOBILES
PEUGEOT
29, Rue de Berri, PARIS 8^e
TYPE 404
N. D. ORDRE 4,114,060
SÉRIE TYPE 4,114,060
P. D. TOTAL AUTOMOBILE ENCHARGE 1,580 kg
GRAISSAGE
utiliser exclusivement
les lubrifiants **Esso**
voir les instructions de la notice d'entretien
Demander à tous nos Concessionnaires le
Graissage Complet **Esso**
MADE IN FRANCE

Manufacturer's plate

Q - 404 - 4.114.060 - Q

Serial N°

3,993 S
Body N°

Engine N°



IDENTIFICATION

15

223

